



USES AND
RACOMMENDS



www.tmracing.it

TM Racing SpA - Via Fano, 6
61122 Pesaro - ITALY
Phone: +39 0721 25113

2T112MXJ23-M

**MOTORE
ENGINE**

25/07/2023



INFORMAZIONI GENERALI

Il presente catalogo serve per richiedere con esattezza le parti di ricambio.

Nelle ordinazioni indicare:

1) Il numero di matricola del Telaio che è stampigliato sul lato destro del canotto di sterzo. Nei modelli EN, SMR, SMR il numero di matricola è riportato anche su una targhetta posta sul lato sinistro (Vedi foto).

2) il numero di serie del Motore. E' posto sulla sinistra del motore tra la leva cambio e i coperchio accensione (Vedi foto).

3) Il codice dei particolari seguito dalla descrizione.

4) Il colore per i pezzi verniciati o comunque colorati.

Le indicazioni destra e sinistra si riferiscono ai lati del veicolo rispetto al senso di marcia.

Foto e disegni sono solo a scopo informativo e potrebbero non corrispondere esattamente alle caratteristiche dei prodotti.

GENERAL INFORMATION

The present spare parts catalogue enables one to order exactly the right spare part.

When ordering specify:

1) The frame serial number. It is embossed on the right side of the steering metal tube. In the EN, SMR and SMR models, the serial number is also stated on a plate positioned on the left hand side (See photo).

2) The engine serial numer. It is located on the left side of the engine between the gear lever and the ignition cover (See photo).

3) The part's code number followed but its description.

4) Indicate colour for painted or colored parts.

References to right and left apply to the vehicle in terms of its direction of movement.

Photos and drawings are for informational purposes only and may not exactly match the characteristics of the products.

NOTE – LEGENDA

MY

NOVITA' INTRODOTTA DIFFERENTE O NON PRESENTE NEL MODELLO DELL'ANNO PRECEDENTE

PART DIFFERENT OR NOT PRESENT IN THE REVIOUS YEAR MODEL

5M

MOTORE CON CAMBIO A 5 MARCE
ENGINE WITH 5 GEARS SPEED

6M

MOTORE CON CAMBIO A 6 MARCE
ENGINE WITH 6 GEARS SPEED

KS

MOTORE CON SOLO KICK STARTER
ENGINE WITH KICK STARTER ONLY

ES

MOTORE CON AVVIAMENTO ELETTRICO
ENGINE WITH ELECTRIC STARTER

X

RICAMBIO NON DISPONIBILE ALLA VENDITA
PART CAN NOT BE SOLD SEPARATELY



Le illustrazioni riportate in questo manuale sono fornite solo come riferimento e possono variare dal prodotto effettivo,

Dati indicativi soggetti a modifiche senza impegno di preavviso.

The illustrations in this manual are for reference only and may vary from the actual product.

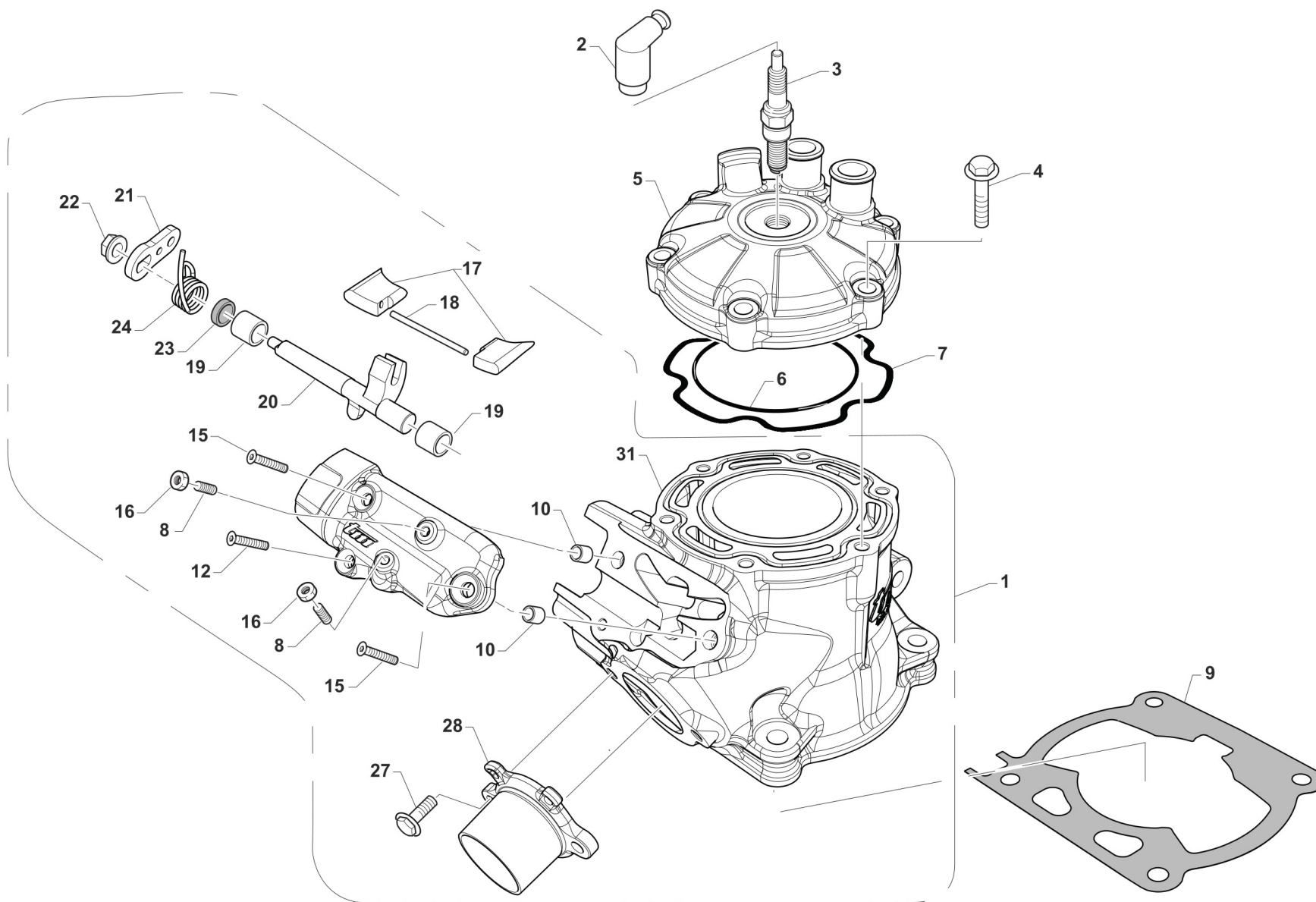
All data are subject to modification without prior notice.



2T112MXJ23-M
MOTORE - ENGINE

SOMMARIO
TABLE OF CONTENTS

| | |
|--|----|
| CILINDRO - CYLINDER..... | 4 |
| ALBERO MOTORE E PISTONE - CRANKSHAFT AND PISTON..... | 6 |
| ACCENSIONE - IGNITION..... | 8 |
| CENTRIFUGA E CARTER FRIZIONE - WATER PUMP - CLUTCH COVERS..... | 10 |
| FRIZIONE - CLUTCH..... | 13 |
| BASAMENTO E PACCO..... | 16 |
| MESSA IN MOTO - KICK STARTER..... | 18 |
| COMANDO CAMBIO - GEARSHIFT MECHANISM..... | 20 |
| CAMBIO - GEAR BOX..... | 23 |
| VITI COPERCHI..... | 26 |
| VITI BASAMENTO..... | 28 |



TM0172



2T112MXJ23-M
MOTORE - ENGINE

CILINDRO
CYLINDER

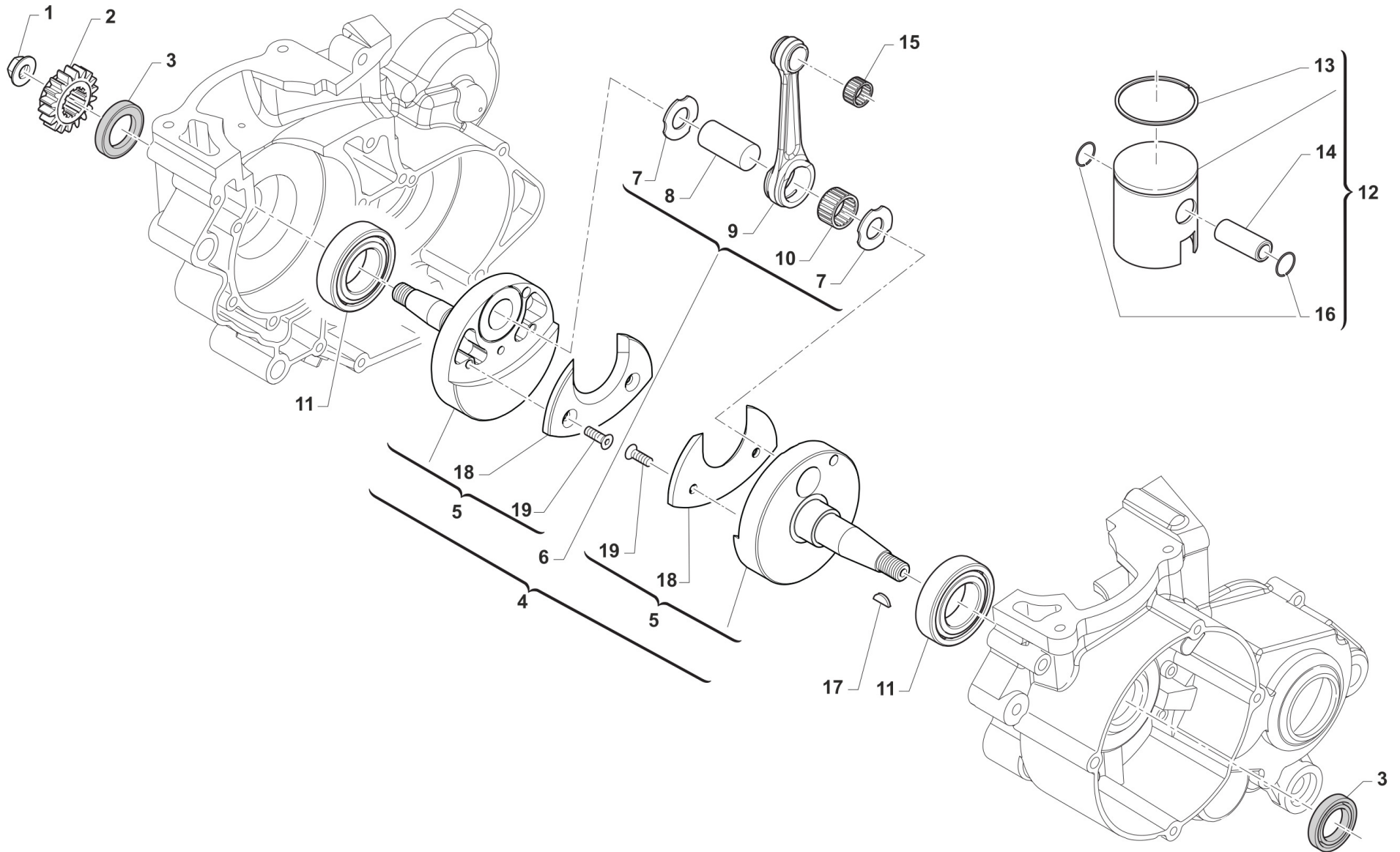
1

| Pos. | Codice | Q.tà | Note | Descrizione | Description |
|------|----------|------|------|--|--------------------------------|
| 1 | 01139 | 1 | | CILINDRO 112 MY2021 CPL | |
| 2 | F21418 | 1 | | PIPETTA CANDELA NGK VD05FMH | CAP, NGK SPARK PLUG VD05FMH |
| 3 | F06105 | 1 | | CANDELA NGK CR9EIX CON/NIPPLO | SPARK PLUG NGK CR9EIX |
| 4 | 49357 | 6 | | VITE TE F/R 6X25 Ch.8 | BOLT 6X25 T.8 |
| 5 | 02031 | 1 | | TESTA 112 2T | |
| 6 | 12003 | 1 | | O RING TESTA 125 90/06KVK8-910 NBR | O-RING, HEAD 125 90/06 KV8910 |
| 7 | 12021 | 1 | | O RING PREFORMATO CIL.125/12-> | O-RING, HEAD 125EV M. 2012 |
| 8 | 49189 | 2 | | GRANO 4X10 PUNTA PIATTA | |
| 9 | 05537.20 | 1 | | GUARN. B/CIL 112 M.2021 0,2 | |
| 9 | 05537.30 | 1 | | GUARN. B/CIL 112 M.2021 0,3 | |
| 9 | 05537.40 | 1 | | GUARN. B/CIL 112 M.2021 0,4 | |
| 9 | 05537.50 | 1 | | GUARN. B/CIL 112 M.2021 0,5 | |
| 10 | 26041 | 2 | | GRANO CENTRAGGIO D.7X8 F.5,2 | DOWEL PIN 7 x 8 Hole 5,2 |
| 12 | 49401 | 1 | | VITE TSEI 5X16 | BOLT TSEI 5x16 |
| 15 | 49402 | 2 | | VITE TSEI 5X20 | BOLT TSEI 5X20 |
| 16 | 49630.3 | 2 | | DADO M 4 x 3 | |
| 17 | 22087 | 1 | | VALVOLA GHIGL. 112 MOD. 2020 | |
| 18 | 19079 | 1 | | RULLINO 4X30 V.SC.112 | |
| 19 | 19045 | 2 | | ASTUCCIO A RULLI HK 0810 | NEEDLE BUSH HK 0810 |
| 20 | 28026 | 1 | | ALBERINO COM VAL.125/250 99/11 | SHAFT P.VALVE 125/250 M. 99/05 |
| 21 | 28039 | 1 | | PIASTRINO SUP.V 80/125 99/06 250 97/05 | UP PLATE, VALVE 80/125 99/06 |
| 22 | 49701 | 1 | | DADO M 5 FLANGIATO VALV. | NUT 5mm, FLANGED VALV. |
| 23 | 04006 | 1 | | PARAOLIO VALV.SCARIC.G.8x12x3 | OIL SEAL 8 x 12 x 3 |
| 24 | 16057 | 1 | | MOLLA ALBERINO VALV.85 M13 1.5 | SPRING EXH.VALVE SHAFT 85cc1,5 |
| 27 | 49355 | 2 | | VITE TE F/R 6X16 Ch.8 | BOLT 6X16 T.8 |
| 28 | 13089 | 1 | | COLLETTORE SCARICO 112 | |
| 31 | 01126 | 1 | | CILINDRO 112 M2020 NUDO | |



2T112MXJ23-M
MOTORE - ENGINE

ALBERO MOTORE E PISTONE
CRANKSHAFT AND PISTON



TM0173



2T112MXJ23-M
MOTORE - ENGINE

ALBERO MOTORE E PISTONE
CRANKSHAFT AND PISTON

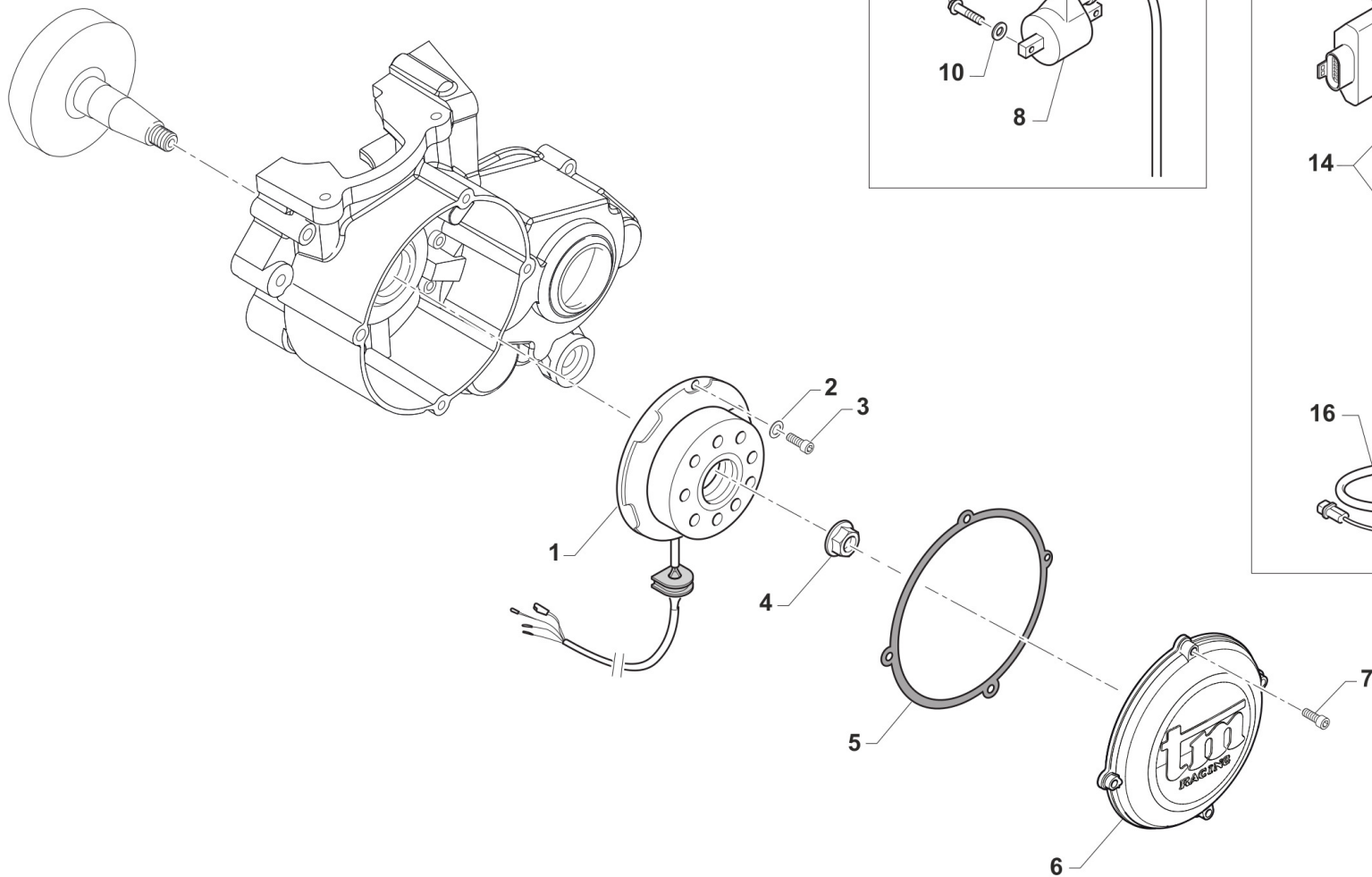
2

| Pos. | Codice | Q.tà | Note | Descrizione | Description |
|------|----------|------|------|--|--|
| 1 | 49056 | 1 | | DADO ACCENS 100/TAG/KZ 125MX/E | NUT, IGNITION 100cc |
| 2 | 40055 | 1 | | PIGNONE COPPIA PRIM.Z15 80 M06 | PRIMARY DRIVE GEAR 15T 80 M.06 |
| 3 | 04035 | 2 | | PARAOLIO 20x30x7 PTFE | OIL SEAL 20 x 30 x 7 PTFE |
| 4 | 18288 | 1 | | ALBERO MOTORE 112 CC CPL | |
| 5 | 18272 | 1 | | COPPIA SEMIALBERI MOTORE 112 CC | |
| 6 | 18147 | 1 | | BIELLA 112cc MY2021 CPL | |
| 7 | 18061 | 2 | | RONDELLA ARGENTATA D.20X34X1 | WASHER, SILVER ID.20 |
| 8 | 18271 | 1 | | ASSE ACCOP. 20 X 48 FORO 5 [85/112 CC] | CON-ROD PIN 20 X 48 H. 5mm |
| 9 | 18146 | 1 | | BIELLA 112cc ASSE D.20mm L.104 NUDA | |
| 10 | 17020 | 1 | | GABBIA ARGENTATA D. 20 IKO | SILVER CAGE D.20 |
| 11 | 03020 | 2 | | CUSCINETTO RULLI NJ205ET2XC3 (BANCO 85/100 M.18) | BUSH CRANKSHAFT 85/100->18 NJ205ET2XC3 |
| 12 | 10027.95 | 1 | | PISTONE D.51,95 112cc COMPLETO | |
| 12 | 10027.96 | 1 | | PISTONE D.51,96 112cc COMPLETO | |
| 12 | 10027.97 | 1 | | PISTONE D.51,97 112cc COMPLETO | |
| 13 | 11060 | 1 | | SEGMENTO 100 cc CR.52 X 2 (112) | PISTON RING 100cc CR.52X2 |
| 14 | 09021 | 1 | | SPINOTTO PISTONE 112 39 x 14 F.9 | |
| 15 | 19035 | 1 | | GABBIA SPINOTTO 100 CC KART e 112 cc MX | TOP END B. KART 100cc |
| 16 | 09020 | 2 | | ANELLINO PISTONE 112cc D.14x1 TYPE C | |
| 17 | 49010 | 1 | | CHIAVETTA VOLANO 13x5x3 | WOODRUFF KEY |
| 18 | 18141 | 2 | | GUANCETTA AL SEMIALBERO 112 | |
| 19 | 49403U | 4 | | VITE TSEI 6x12 UNBRAK UNI 5933 | BOLT TSEI 6X12 UMB. |



2T112MXJ23-M
MOTORE - ENGINE

ACCENSIONE
IGNITION



0178.01

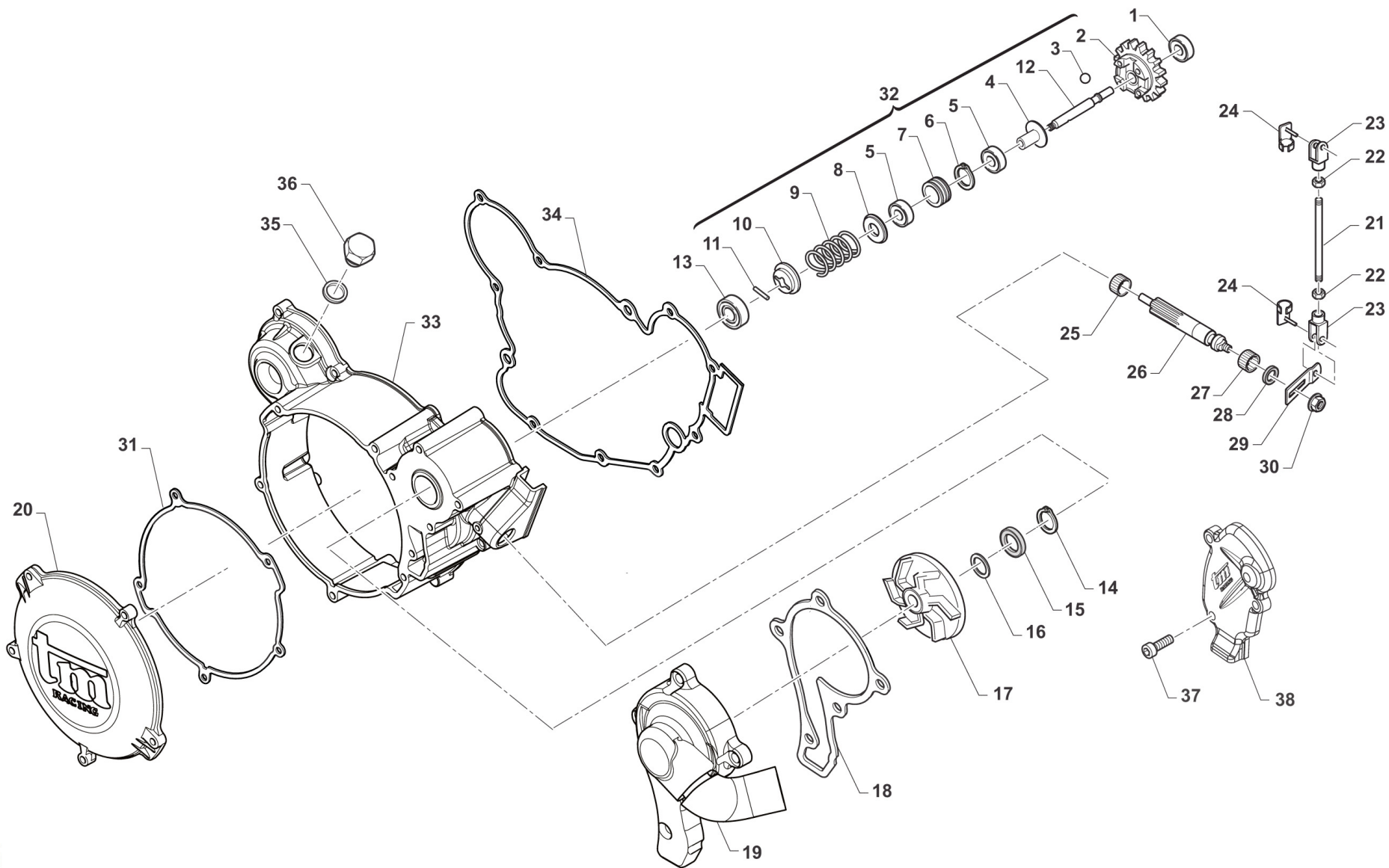


2T112MXJ23-M
MOTORE - ENGINE

ACCENSIONE
IGNITION

3

| Pos. | Codice | Q.tà | Note | Descrizione | Description |
|------|--------------|------|------|--------------------------------|-------------------------------------|
| 1 | 15230 | 1 | | GENERATORE KOK END 11 MX/E 12 | GENERATOR KOK END 11 MX/E 12-> |
| 2 | 49902 | 2 | | RONDELLA 6,5X13X3 | |
| 3 | 49484 | 2 | | VITE TCEI 6X20 | BOLT TCEI 6X20 |
| 4 | 49056 | 1 | | DADO ACCENS 100/TAG/KZ 125MX/E | NUT, IGNITION 100cc |
| 5 | 05516 | 1 | | GUARN. COP.ACC. 80/125 KOKUSAN | GASKET, KOK.IGNIT.COV. 80/125 |
| 6 | 30211 | 1 | | COP. ACC. MX 125/144 06/11 E11 | COVER, IGNITION MX 80/125 2006 KOK. |
| 7 | 49477 | 4 | | VITE TCEI 5X25 UNI 5931-912 | BOLT TCEI 5X25 |
| 8 | 15206 | 1 | | BOBINA KOKUSAN PIC. 2T IG7112 | COIL, KOKUSAN 2 STROKE IG7112 |
| 9 | 49357 | 2 | | VITE TE F/R 6X25 Ch.8 | BOLT 6X25 T.8 |
| 10 | 49603 | 2 | | RONDELLA M 6,4 X 12 X 1,6 | WASHER 6x12 |
| 11 | 15209.112001 | 1 | | CENTRALINA TM IG_MX 112_01 | |
| 12 | F15562 | 1 | | SUPPORTO CENTRALINA KOKUSAN | HOLDER ECU KOKUSAN |
| 13 | F26537 | 1 | | PIASTR.FISS.SUP.ECU KOK.F15562 | PLATE HOLDER UCU KOKUS. F15562 |
| 14 | 49633 | 2 | | DADO M 5 BASSO AUTOBLOCCANTE | NUT 5mm, LOW SELF-LOCKING |
| 15 | 49317 | 2 | | VITE TB LARGA 5X10 LAT.SERB.94 | BOLT TB LARGE 5X10 |
| 16 | 68120 | 1 | | CABLAGGIO CDI KOK 2T 08/10 | WIRE ECU KOKUSAN 2S 08/10 |



0175.01



2T112MXJ23-M
MOTORE - ENGINE

CENTRIFUGA E CARTER FRIZIONE
WATER PUMP - CLUTCH COVERS

4

| Pos. | Codice | Q.tà | Note | Descrizione | Description |
|------|-----------|------|------|--|--------------------------------|
| 1 | 03025 | 1 | | CUSCINETTO 626 C3 POMPA H2O 06 | BUSH, WATER PUMP 626 C3 |
| 2 | 40056 | 1 | | INGR. VALVOLA CENTRIF. 85 2006 | EXHAUST VALVE GEAR 80cc M.06 |
| 3 | 19054 | 4 | | SFERA D.12 | BALL DIAM. 12 mm |
| 4 | 40065 | 1 | | BUSSOLA PER CENTRIFUGA 10/11 | SPIN BUSH 10/11 |
| 5 | 03028 | 2 | | CUSCINETTO 61901 MODIFIC 10/11 | BUSH, 61901 |
| 6 | 49263 | 1 | | SEEGER I 24 | SEEGER I 24 |
| 7 | 40059 | 1 | | RUOTA DENTATA CENTRIFUGA 10/11 | GEAR SPIN WHEEL 10/11 |
| 8 | 48031 | 1 | | RONDELLA GUIDA MOLLA ANT.2010 | WASHER, SPRING, FRONT |
| 9 | 16056 | 1 | | MOLLA CENTRIFUGA JUNIOR 2013 | SPRING, SPIN EXHAUST VALVE J13 |
| 10 | 48024 | 1 | | RONDELLA GUIDA MOLLA PST.06(2) | WASHER, SPRING, REAR |
| 11 | F19503 | 1 | | RULLINO D.3 X 13.8 | PIN D.3 X 13,8 F.S. |
| 12 | 28004 | 1 | | ALBERINO POMPA E CENTR.2006 | SHAFT, WATERPUMP 2006 |
| 13 | 03014 | 1 | | CUSCINETTO 608 ZC3 POMPA SCHER | BUSH, WATER PUMP 608 Z C3 |
| 14 | 49215 | 1 | | SEEGER I22 POMPA ACQUA | CIRCLIP D.22 WATER PUMP |
| 15 | 04017 | 1 | | PARAOLIO CENTRIFUGA 06 +MF1TAG | OIL SEAL 8 X 22 X 7 TC |
| 16 | 49689 | 1 | | RONDELLA 6 X 12 SP. 1.2 | WASHER 6x12 sp. 1,2 |
| 17 | 28009 | 1 | | GIRANTE POMPA ACQUA 2006/08 | IMPELLER, WATER PUMP M.06/-> |
| 18 | 05528 | 1 | | GUARN. POMPA ACQUA 125 2006 | GASKET WATER PUMP 125cc 2006 |
| 19 | 30194.112 | 1 | | COPERCHIO POMPA H2O 112 CC | |
| 20 | 30187 | 1 | | COPERCHIETTO FRIZ. 125 M.2006 | COVER, CLUTCH, EXT. 125 06/-> |
| 21 | 28044 | 1 | | ASTINA VALVOLA 93,5 mm 125/112 CR/E 2006 | ROD, POWER VALVE 125 MX/E 2006 |
| 22 | 49630 | 2 | | DADO M 4 (BASSO) | NUT 4mm, LOW |
| 23 | 49041 | 2 | | FORCHETTINA M4 X VALVOLA SC. | FORK, POWER VALVE ROD |
| 24 | 49042 | 2 | | MOLLA BLOCCA FORCHETTINA M4 | SPRING, POWER VALVE FORK M4 |
| 25 | 19048 | 1 | | ASTUCCIO A RULLI HK 0608 | NEEDLE CAGE HK 0608 |
| 26 | 28005 | 1 | | ALBERINO COM. VALVOLA SC.06/10 | SHAFT, INLET VALVE 2006 |
| 27 | 19044 | 1 | | GABBIA A RULLI FRENO POST. | NEEDLE BUSH REAR BRAKE PEDAL |
| 28 | F04354 | 1 | | PARAOLIO G 12X16X3 POMPA OLIO | OIL SEAL G 12/13/3 OIL PUMP |

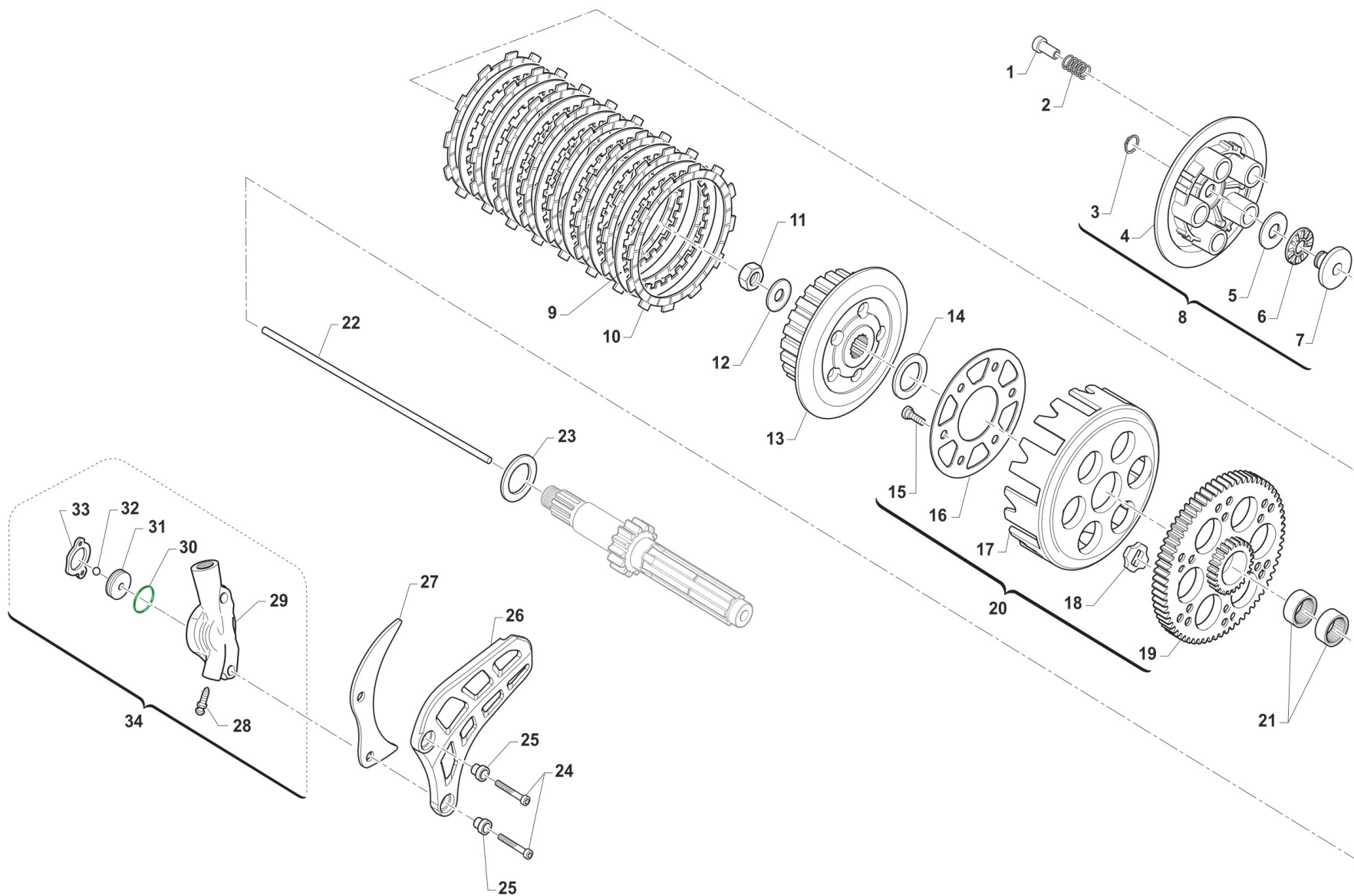


2T112MXJ23-M
MOTORE - ENGINE

CENTRIFUGA E CARTER FRIZIONE
WATER PUMP - CLUTCH COVERS

4

| Pos. | Codice | Q.tà | Note | Descrizione | Description |
|------|----------|------|------|----------------------------------|--------------------------------|
| 29 | 28043 | 1 | | PIASTRINO INF. VALV. 125/2006 | VALVE LOW PLATE 125/2006 |
| 30 | 49701 | 1 | | DADO M 5 FLANGIATO VALV. | NUT 5mm, FLANGED VALV. |
| 31 | 05526 | 1 | | GUARN. COP.FRIZ. EST.125 06/-> | GASKET, EXT.CLUTCH COVER 125/6 |
| 32 | 28004.85 | 1 | | ALBERINO POMP.CENTR 85 CPL 13> | SHAFT, WATERPUMP 85 ASSY 13-> |
| 33 | 30186 | 1 | | CARTER FRIZIONE 125 M.06/11 | COVER, INT CLUTCH 125 M.06/11 |
| 34 | 05527 | 1 | | GUARN. COP.FRIZ. INT.125 06/-> | GASKET, CLUTCH CASE 125 06/-> |
| 35 | 49103 | 1 | | RONDELLA 14X20X1,5 ALLUMINIO | WASHER, 14 X 20 X 1.5 ALUMINUM |
| 36 | 49300 | 1 | | TAPPO CARICO OLIO | OIL PLUG, FILL |
| 37 | 49472 | 3 | | VITE TCEI 5X12 UNI 5931-912 Brun | BOLT TCEI 5X12 |
| 38 | 30296 | 1 | | COPERCHIO LEVERAGGI 112 2T | |



TM0174



2T112MXJ23-M
MOTORE - ENGINE

FRIZIONE
CLUTCH

5

| Pos. | Codice | Q.tà | Note | Descrizione | Description |
|------|----------|------|------|---------------------------------------|---------------------------------------|
| 1 | 49058 | 5 | | DADO FRIZIONE ERGAL 85CC 2014 | NUT, CLUTCH 85cc ERGAL 14-> |
| 2 | 16020 | 5 | | MOLLA FRIZIONE 125 C/E 03/08BA | SPRING, CLUTCH 125 MX/E 03/-> |
| 3 | 49211 | 1 | | SEEGER E10x1 ANELLO PIATT.REG. | CIRCLIP D.8,4 - EXTERNAL |
| 4 | 35015 | 1 | | PIATTO SPINGIDISCO FRIZIONE 125 97-> | PLATE, CLUTCH PRESS.125 97/02 |
| 5 | 19021 | 1 | | RONDELLA X GABBIA RULLI AS1024 | WASHER, NEEDLE CAGE AS 1024 |
| 6 | 19020 | 1 | | GABBIA A RULLI RAD. AXK 1024 | NEEDLE CAGE AXK 1024, RADIAL |
| 7 | 26001 | 1 | | REGGISPINTA FRIZIONE | CLUTCH THRUST |
| 8 | 35025 | 1 | | PIATTO SPING.FRIZ 125/KART CPL | PLATE, CLUTCH PRESSURE ASSY |
| 9 | 35019 | 7 | | DISCO FRIZ. ACC. 1mm 99/05 | CLUTCH PLATE, STEEL 1mm 99/05 |
| 10 | 35012 | 8 | | DISCO FRIZ. GUARN.CR/E M.93-> | CLUTCH PLATE, FIBER 85/125 MX/E 93/-> |
| 11 | 49052 | 1 | | DADO TAMBURELLO FRIZIONE | NUT, CLUTCH CENTER |
| 12 | 49127 | 1 | | MOLLA A TAZZA DIN 2093 28X14,2X1,25 | DISC SPRING DIN 2093 28x14,2x1,25 |
| 13 | 25099.14 | 1 | | TAMBURELLO FRIZIONE 125 2014 | CLUTCH CENTRE 125cc M.14-> |
| 13 | 50124 | 1 | | CHIAVE FRIZ. 85/125 + KART CPL | CLUTCH TOOL 85/125cc + KART |
| 14 | 48002 | 1 | | SPESSORE COP.PRIM.30X18X3 | SPACER 30x18x3 |
| 15 | 49727 | 6 | | VITE PARASTRAPPI K9 M7X1X12.5 | SCREW, M7X1X12,5 K9 ENGINE |
| 16 | 35026 | 1 | | DISCO BATTUTA GOMM. FRIZ.KZ10B 85/125 | DISC STOP RUBBERS CLUTCH KZ10B |
| 17 | 25000 | 1 | | CAMPANA FRIZ.125 M.91/96 99/13 | CLUTCH BASKET 125 91/96 99/05 |
| 18 | 21005 | 6 | | GOMMINO PARASTRAPPI FRIZIONE | RUBBER, CLUTCH BASKET |
| 19 | 40400 | 1 | | COPPIA PRIM. 80/85 Z66 | PRIMARY GEAR 66T, 80/85 |
| 20 | 40404 | 1 | | COPPIA PRIM. 80/85 Z66 CPL/CAM | PRIMARY GEAR 66T, 80/85 Comp. |
| 21 | 19013 | 2 | | GABBIA A RULLI K 20X24X12 | NEEDLE CAGE 20 X 24 X 12 |
| 22 | 35043 | 1 | | ASTINA FRIZ. IDR. 125 M.99/10 | ROD, HYDR.CLUTCH 125 M. 99/04 |
| 23 | 48003 | 1 | | SPESSORE COP.PRIM.30X20X2 | SPACER 30X20X2 PRIMARY GEAR |
| 24 | 49486 | 2 | | VITE TCEI 6X30 UNI 5931 | BOLT TCEI 6X30 |
| 25 | 26212 | 2 | | BOCCOLA PROT. PIGNONE 125 F.6 | COLLAR, SPROCKET 125cc H.6 |
| 26 | 40029 | 1 | | PROTEZIONE PIGNONE 09/-> PLAST | PROTECTION FRONT SPROCKET09/13 |
| 27 | 40022 | 1 | | PROTEZIONE ERGAL PIGNONE CAT. | PROTECTION, GEAR CHAIN ERGAL |

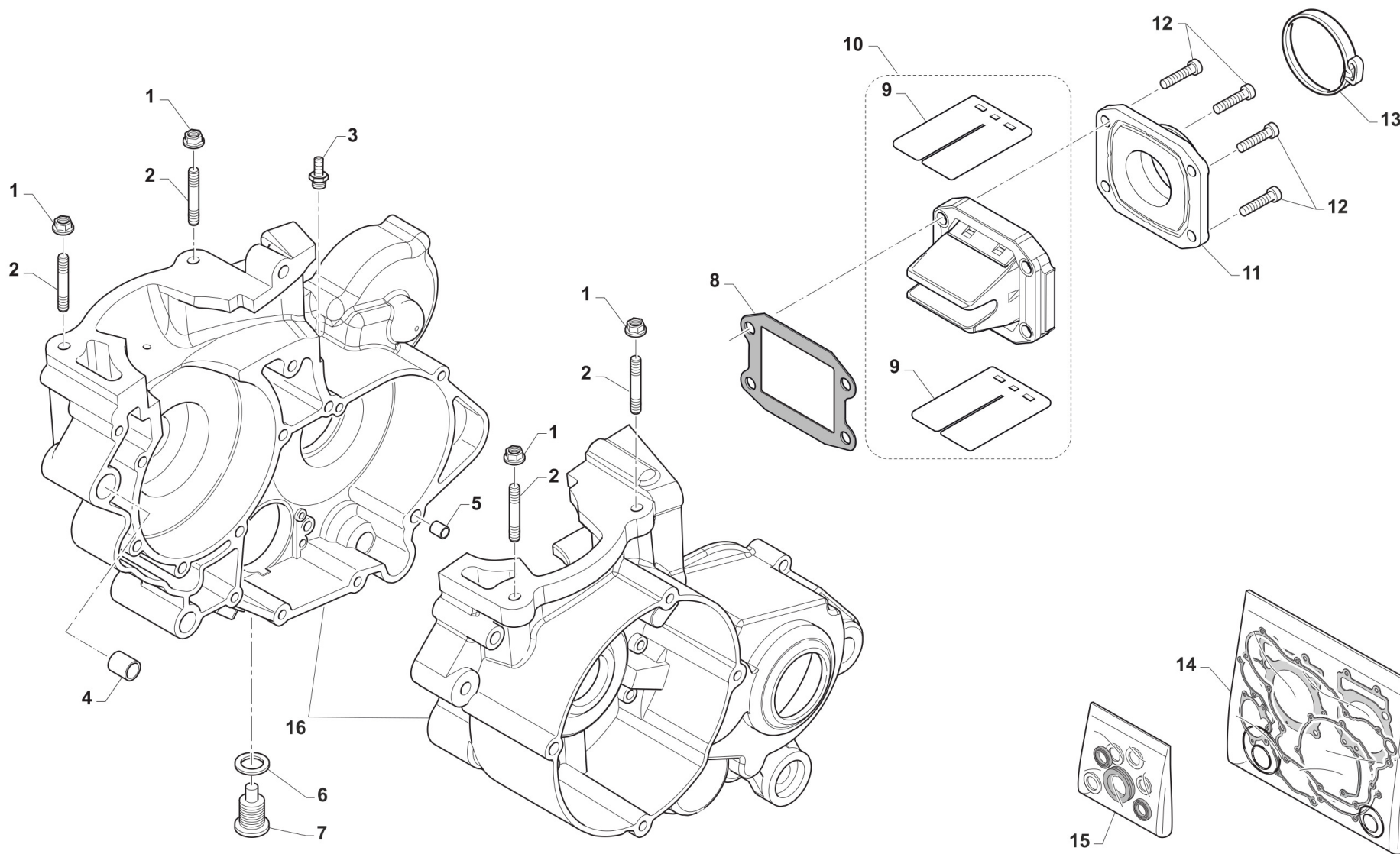


2T112MXJ23-M
MOTORE - ENGINE

FRIZIONE
CLUTCH

5

| Pos. | Codice | Q.tà | Note | Descrizione | Description |
|------|--------|------|------|--------------------------------|--------------------------------|
| 28 | 35264 | 1 | | VITE SPURGO OLIO FRIZ.IDR.6X1 | SCREW AIR BLED HYDRAUL.CLUTCH |
| 29 | 30205 | 1 | | COP. FRIZ/IDR 80/125 95/11 NUD | OUTPUT H.CLUTCH CYLINDER |
| 30 | 12259 | 1 | | O RING PISTONE FR.125/250VERDE | O-RING, CLUTCH PISTON 125/250 |
| 31 | 35125 | 1 | | PISTONE POMPA FRIZ. 125 95/-> | PISTON, CLUTCH PUMP 125 95/04 |
| 32 | 19052 | 1 | | SFERA 8 X FRIZIONE 250 5/16" | BALL, IDR. CLUTCH PUMP |
| 33 | 05509 | 1 | | GUARN. POMPA FRIZ.IDR. 80/125 | GASKET, HYDRAULIC CLUTCH80/125 |
| 34 | 30206 | 1 | | COP. FRIZ/IDR 85/125 95/-> CPL | OUTPUT H.CLUTCH CYLINDER CPL. |



TM0176



2T112MXJ23-M
MOTORE - ENGINE

BASAMENTO E PACCO

6

| Pos. | Codice | Q.tà | Note | Descrizione | Description |
|------|--------|------|------|-----------------------------------|--------------------------------|
| 1 | 49640 | 4 | | DADO M 8 FLANGIATO CHIAVE 12 | NUT 8mm, FLANGE |
| 2 | 49043 | 4 | | PRIGIONIERO CIL.M8X48,5 85/100 | |
| 3 | 49002 | 1 | | RACCORDO SFIATO VALV.MOT.F.D.3 | FITTING VENT VALVE |
| 4 | 26043 | 1 | | GRANO CARTER ANT. 14 X 14 | GRUB SCREW 14X14 |
| 5 | 26044 | 1 | | GRANO CENTRAGGIO MOTOR.10X13,6 | GRUB SCREW 10X13,6 |
| 6 | 49103 | 1 | | RONDELLA 14X20X1,5 ALLUMINIO | WASHER, 14 X 20 X 1.5 ALUMINUM |
| 7 | 49301 | 1 | | TAPPO OLIO C/CALAM. 2T | OIL PLUG WITH MAGNET |
| 8 | 05262 | 1 | | GUARN. PACCO LAMELLE 80/85 | GASKET, REEDS VALVE 80/85cc |
| 9 | 20092 | 1 | | LAMELLE V-FORCE 4R 85/100 | |
| 10 | 20090 | 1 | | PACCO LAMELLARE 112 VF4 | |
| 11 | 13095 | 1 | | COLLETTORE ASP.80/85*13 KEI.28 | INLET MANIFOLD 85 13-> KEIH.28 |
| 12 | 49484 | 4 | | VITE TCEI 6X20 | BOLT TCEI 6X20 |
| 13 | 51063 | 1 | | FASCETTA SM9 D.40 | CLAMP SM9 D.40mm |
| 14 | 05627 | 1 | | KIT GUARN. + OR 112 CC | |
| 15 | 04037 | 1 | | KIT PARAOLI 85/100 MOD. 2016/2022 | OIL SEAL 85 / 100 MY 18-> |
| 16 | 30297 | 1 | | BASAMENTO MOTORE 112 2021 | |

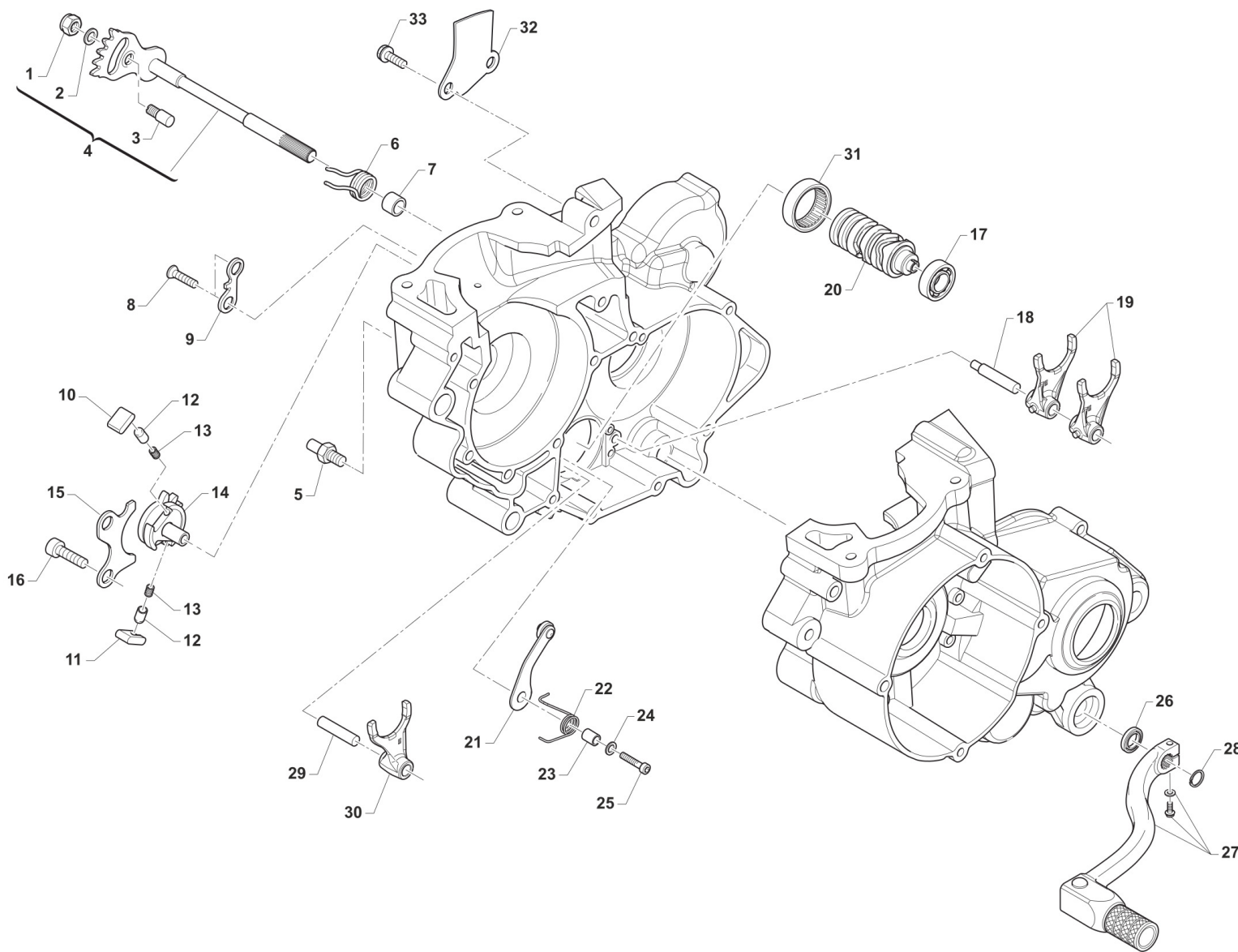


2T112MXJ23-M
MOTORE - ENGINE

MESSA IN MOTO
KICK STARTER

7

| Pos. | Codice | Q.tà | Note | Descrizione | Description |
|------|----------|------|------|--------------------------------------|--------------------------------|
| 1 | 43038 | 1 | | LEVA M/M 80/125 M. 99/-> | LEVER, KICK STARTER 125 99/-> |
| 2 | 49368 | 1 | | VITE TE F/R 6X10 LEVA M/M | BOLT 6X10 (Kich Starter) |
| 3 | 04005 | 1 | | PARAOLIO ALBERINO M/M 15x24x7 | OIL SEAL 15 x 24 x 7 |
| 4 | 26005 | 1 | | DISTANZIALE MOLLA M/M | SPACER, KICK STARTER SPRING |
| 5 | 16008 | 1 | | MOLLA M/M 80 / 125 / 144 cc | SPRING, KICK STARTER |
| 6 | 49406 | 1 | | VITE TSEI 6X20 | BOLT TSEI 6x20 |
| 7 | 12260 | 1 | | O RING INTERNO LEVA M/M 250 | O-RING INT.LEVER KICK START250 |
| 8 | 43039.01 | 1 | | MOZZETTO KICK START 125 M. 96 -> | |
| 9 | 16039 | 1 | | MOLLA X SFERA LEVA M/M 250 CC | SPRING, BALL KICK-START. 250cc |
| 10 | 43250.03 | 1 | | SFERA 1/4C X LEVA M/M 250 CC | BALL, KICK STARTER LEVER 250cc |
| 12 | 48008 | 1 | | RONDELLA ALBERO MESSA IN MOTO | WASHER, KICK STARTER SHAFT |
| 13 | 19010 | 1 | | GABBIA A RULLI K 15X19X10 | BUSH NEEDLE CAGE 15 X 19 X 10 |
| 14 | 28051 | 1 | | ALBERO MESSA IN MOTO 125/144 96/18 | SHAFT, KICK STARTER 125 96/05 |
| 15 | 40350 | 1 | | INGRANAGGIO SCORREVOLE M/M 125 / 144 | SLIDING GEAR, KICK STARTER 125 |
| 16 | 16006 | 1 | | MOLLA X INGRANAGGIO M/M | SPRING, KICKSTART SLIDING GEAR |
| 17 | 26254 | 1 | | LEVA BATTUTA M/M 125/250 96/-> | STOPPER, KICK STARTER |
| 18 | 49214 | 1 | | SEEGER E15 INGRANAGGIO M/M | CIRCLIP GEAR K.S. 15mm |
| 19 | 48004 | 2 | | SPESSORE INGRANAGGIO M/M | SPACER, K.STARTER GEAR |
| 20 | 40351 | 1 | | INGRANAGGIO LIBERO M/M 125 / 144 | GEAR, KICK STARTER 125 |



0702



2T112MXJ23-M
MOTORE - ENGINE

COMANDO CAMBIO
GEARSHIFT MECHANISM

| Pos. | Codice | Q.tà | Note | Descrizione | Description |
|------|----------|------|------|---|--|
| 1 | 49638 | 1 | | DADO M 6 ALTO AUTOBLOCCANTE | NUT 6mm, HIGHT SELF-LOCKING |
| 2 | 49603 | 1 | | RONDELLA M 6,4 X 12 X 1,6 | WASHER 6x12 |
| 3 | 26050 | 1 | | BATTUTA ECCENTRICA | ADJUSTER SELECTOR SHAFT |
| 4 | 28100 | 1 | | ALBERO COMANDO ING. P.TACRIC. | SHAFT, GEARSHIFT |
| 5 | 26051 | 1 | | BATTUTA FISSA LEVA CAMBIO INT. | PLATE INT. END STROKE GEAR LEVER |
| 6 | 16009 | 1 | | MOLLA RITORNO LEVA CAMBIO 32CR | SPRING, RETURN GEAR LEVER 3,2 |
| 7 | 26006 | 1 | | DISTANZIALE MOLLA LEVA CAMBIO | SPACER, GEAR LEVER SPRING |
| 8 | 49405 | 2 | | VITE TSEI 6X20 UMB.5933 10.9 | BOLT TSEI 6x20 U.5933 10.9 |
| 9 | 26022 | 1 | | PIASTRINO FINE CORSA | PLATE END STROKE GEAR LEVER |
| 10 | 26060 | 1 | | CRICCHETTO CAMBIO SUPERIORE | RATCHET UP, GEAR |
| 11 | 26061 | 1 | | CRICCHETTO CAMBIO INFERIORE | RATCHET DOWN, GEAR |
| 12 | 26062 | 2 | | PUNTALE PER CRICCHETTO CAMBIO | PIN, RATCHET GEAR |
| 13 | 16012 | 2 | | MOLLA PER PUNTALE | SPRING, GEARBOX PIN |
| 14 | 40310 | 1 | | INGRANAGGIO PORTACRICCHETTI | DRUM SHIFTER GEAR |
| 15 | 26021 | 1 | | PIASTRINO RIENTRO CRICCHETTI | PLATE, RATCHET |
| 16 | 49483 | 2 | | VITE TCEI 6X16 UNI 5931 | BOLT TCEI 6X16 |
| 17 | 03012 | 1 | | CUSCINETTO DESMODROMICO 6001 2RS | BUSH, 6001 2RS GEAR DRUM |
| 18 | 33256 | 1 | | PERNO FORCH.ALB.SEC. 250 / 125.99 | AXEL, COUNTERSHAFT FORK 250cc |
| 19 | F33314 | 2 | | FORCHETTA A/S 125/250/300 CROM | SHIFT FORK SECONDARY 125/250CR |
| 20 | 33004 | 1 | | ALBERO DESM.125 INTEGR. 6M CPL 125/144 6 M. CPL DI F26476 | GEAR DRUM 125 6SP. 125/144 ASSY F26476 |
| 21 | 26063.12 | 1 | | PIASTRINO BLOCCAMARCE 2012 CPL | PLATE STOP GEAR ASSY M.12-> |
| 22 | 16252 | 1 | | MOLLA BLOCCAMARCE 125 / 250 2T | |
| 23 | 26007 | 1 | | DISTANZIALE MOLLA BLOCCAMARCE | SPACER, STOP GEAR SPRING |
| 25 | 49485 | 1 | | VITE TCEI 6X25 UNI 5931 | BOLT TCEI 6x25 |
| 26 | 04004 | 1 | | PARAOLIO POMPA H2O-LEVA CAMBIO | OIL SEAL 12 x 22 x 5 |
| 27 | 43048 | 1 | | LEVA CAMBIO 2014 + 12MM (253) 85/125/144 2T 250Fi | GEAR LEVER 2014 +12mm |
| 28 | 49212 | 1 | | SEEGER E12 LEVA CAMBIO | CIRCLIP D.12 - EXTERNAL |

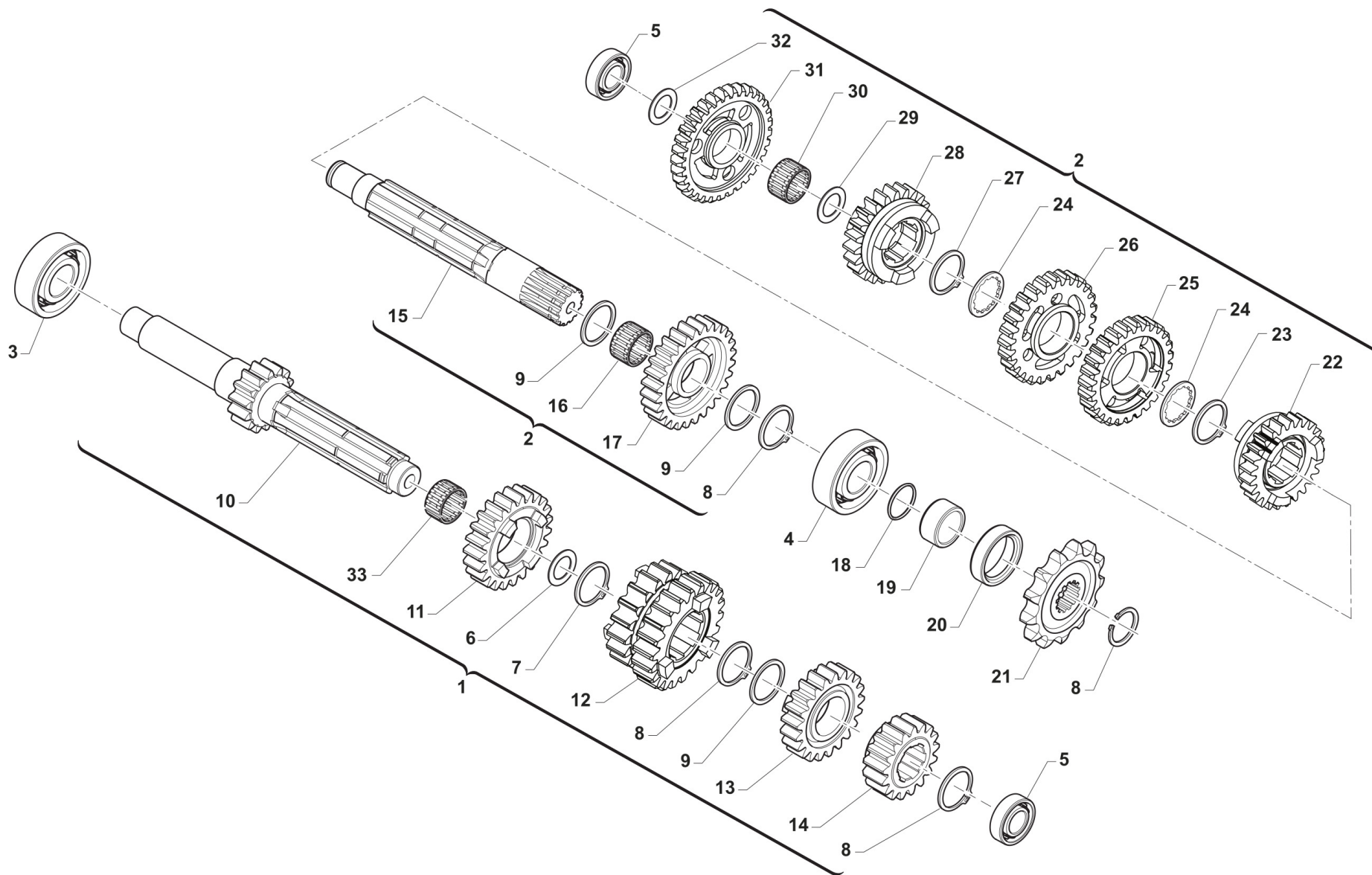


2T112MXJ23-M
MOTORE - ENGINE

COMANDO CAMBIO
GEARSHIFT MECHANISM

8

| Pos. | Codice | Q.tà | Note | Descrizione | Description |
|------|--------|------|------|------------------------------------|--------------------------------|
| 29 | 33255 | 1 | | PERNO FORCH.ALB. PRIM.250 / 125.99 | AXEL, MAINSHAFT FORK 250cc |
| 30 | 33016 | 1 | | FORCHETTA ALB.PRIM.125 PRT.CRM | SHIFT FORK MAINSHAFT 125 CROM. |
| 31 | 19041 | 1 | | ASTUCCIO A RULLI DHK 35/12 | BUSH NEEDLE CAGE DHK 35/12 |
| 32 | 26023 | 1 | | PIASTRINO CONVOGLIATORE OLIO | PLATE, OIL |
| 33 | 49440 | 2 | | VITE TE 6X14 | BOLT TE 6X14 |





2T112MXJ23-M
MOTORE - ENGINE

CAMBIO
GEAR BOX

| Pos. | Codice | Q.tà | Note | Descrizione | Description |
|------|----------|------|------|--|--------------------------------|
| 1 | 40003 | 1 | | ALBERO PRIMARIO CPL 85/100 CC J/MX | PRIMARY ASHFT ASSY 85/100 |
| 2 | 40004 | 1 | | ALBERO SECONDARIO CPL 85/100 CC J/MX | SECONDARY SHAFT ASSY 85/100 |
| 3 | 03011 | 1 | | CUSCINETTO ALBERO PRIM. 6204 Z C3 | BUSH, GEAR MAINSHAFT |
| 4 | 03010 | 1 | | CUSCINETTO 6204 C3 PIG.CATENA | BUSH, COUNTERSHAFT / SPROCKET |
| 5 | 03080 | 2 | | CUSCINETTO 6202 Z C3 (CON RIVETTI) CAMBIO | BUSH, CRAKSHAFT CLUTCH SIDE |
| 6 | 48041 | 1 | | RASAMENTO A/P 27.5X21X1 KZ10B | SPACER, MAINSHAFT 27,5X21X1 KZ |
| 7 | 49222 | 1 | | SEEGER E 21 mm | CIRCLIP D.21 - EXTERNAL |
| 8 | 49216 | 4 | | SEEGER E20 PIGN.-CAMBIO-COPPIA | CIRCLIP D.20 - EXTERNAL |
| 9 | 48013 | 3 | | RASAMENTO A/S 27X20X0,7 | SPACER, 27x20x0,7 |
| 10 | 40713.85 | 1 | | ALBERO PRIMARIO Z 14 85CC RINF.CON SEDE SEEGER | PRIMA SHAFT 14T 85/100 |
| 11 | 40440 | 1 | | INGR. A.P. 5a Z 22 K9B/C 10 CR/E90 | GEAR, 5TH (22T) MAINSHAFT |
| 12 | 40432 | 1 | | INGR A.P. 3/4a Z 19/23 | GEAR, 3/4TH (19-23T) MAINSHAFT |
| 13 | 40451 | 1 | | INGR A.P. 6a Z 23 | GEAR, 6TH (23T) MAINSHAFT |
| 14 | 40423 | 1 | | INGR A.P. 2a Z 17 | GEAR, 2ND (17T) MAINSHAFT |
| 15 | 40460 | 1 | | ALBERO SECONDARIO | COUNTERSHAFT |
| 16 | 19012 | 1 | | GABBIA A RULLI K 20X24X10 | BUSH NEEDLE CAGE 20 X 24 X 10 |
| 17 | 40480 | 1 | | INGR A.S. 2a Z 29 | GEAR, 2ND (29T) COUNTERSHAFT |
| 18 | 12019 | 1 | | O RING PIGNONE CATENA | O-RING, DRIVE GEAR 2075 |
| 19 | 26002.1 | 1 | | DISTANZIALE PIGNONE (MOTO) | SPACER, MOTORCYCLE GEAR |
| 20 | 04003 | 1 | | PARAOLIO PIGN.CATENA (26x37x7) | OIL SEAL 26 x 37 x 7 |
| 21 | 40015 | 1 | | PIGNONE Z 15 PASSO 1/2X5/16 | SPROCKET 15T, DRIVE 1/2X5/16 |
| 21 | 40016 | 1 | | PIGNONE Z 16 PASSO 1/2X5/16 | SPROCKET 16T, DRIVE 1/2X5/16 |
| 21 | 40017 | 1 | | PIGNONE Z 17 PASSO 1/2X5/16 | SPROCKET 17T, DRIVE 1/2X5/16 |
| 22 | 40520 | 1 | | INGR A.S. 6a Z 23 | GEAR, 6TH (23T) COUNTERSHAFT |
| 23 | 49217 | 1 | | SEEGER E22 ANELLO ALB/S | CIRCLIP D.22 - COUNTERSHAFT |
| 24 | 48011 | 2 | | RASAMENTO DENT.A/S 27X22X0,75 | SPACER, 27x22x0,75 |
| 25 | 40500 | 1 | | INGR A.S. 4a Z 28 | GEAR, 4TH (28T) COUNTERSHAFT |
| 26 | 40490 | 1 | | INGR A.S. 3a Z 27 | GEAR, 3RD (27T) COUNTERSHAFT |



2T112MXJ23-M
MOTORE - ENGINE

CAMBIO
GEAR BOX

9

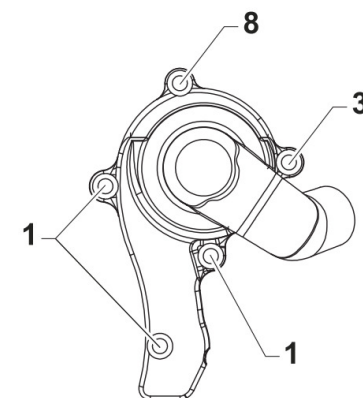
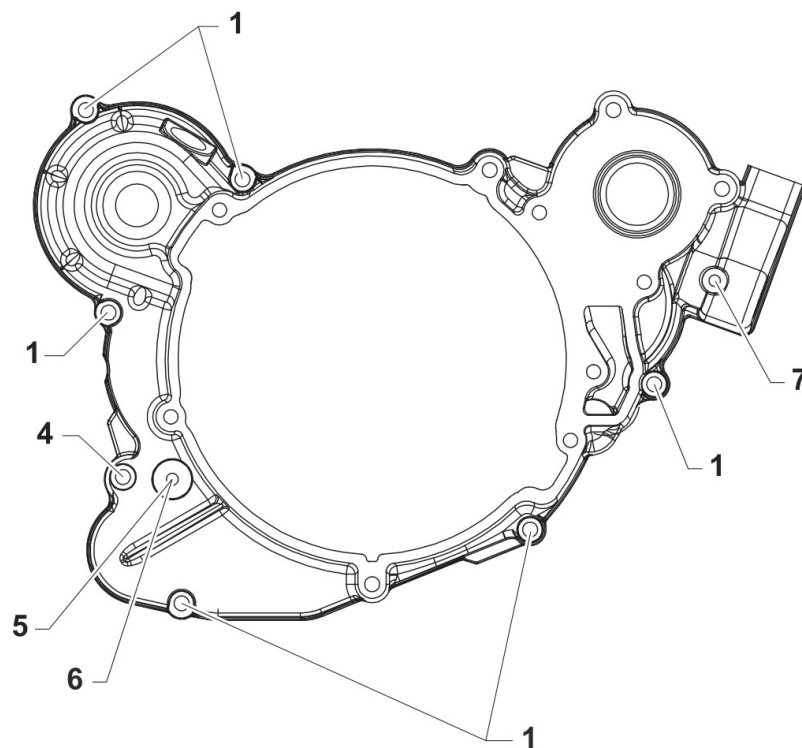
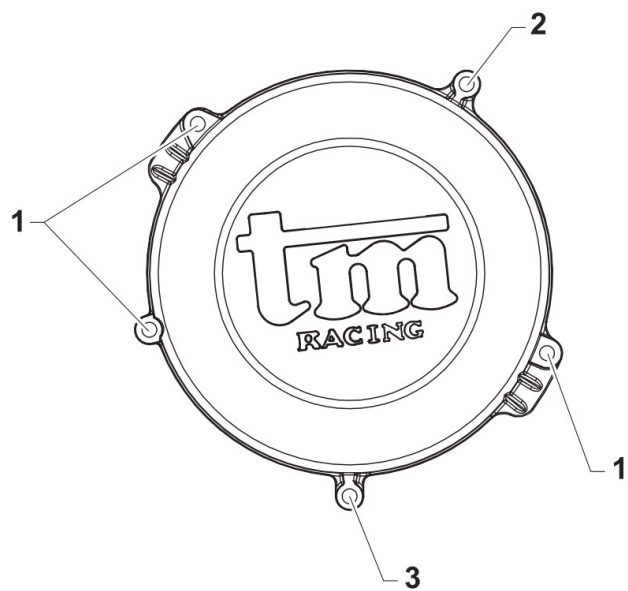
| Pos. | Codice | Q.tà | Note | Descrizione | Description |
|------|---------|------|------|--------------------------------|--------------------------------|
| 27 | 49217.1 | 1 | | SEEGER RETTIFICATO PER 40510 | SEEGER RING FOR CODE 40510 |
| 28 | 40510 | 1 | | INGR A.S. 5a Z 24 CR/E 90 | GEAR, 5TH (24T) COUNTERSHAFT |
| 29 | 48012 | 1 | | RASAMENTO A/S M/M SPESS.0,5 | SPACER, 26x17x0,5 |
| 30 | 19011 | 1 | | GABBIA A RULLI K 17X21X10 | BUSH CAGE 17 X 21 X 10 |
| 31 | 40707 | 1 | | INGR A.S. 1a Z 32 CR/90 | GEAR, 1ST(32T)COUNTERSH. MX/90 |
| 32 | 48010 | 1 | | RASAMENTO ALB/S.28X15X0,5 INGI | SPACER, 28x15x0,5 |
| 33 | 19071 | 1 | | GABBIA A 20X24X10 IN DUE META' | NEEDLE CAGE 20X24X10 TWO PIEC. |



2T112MXJ23-M
MOTORE - ENGINE

VITI COPERCHI

10



0704



2T112MXJ23-M
MOTORE - ENGINE

VITI COPERCHI

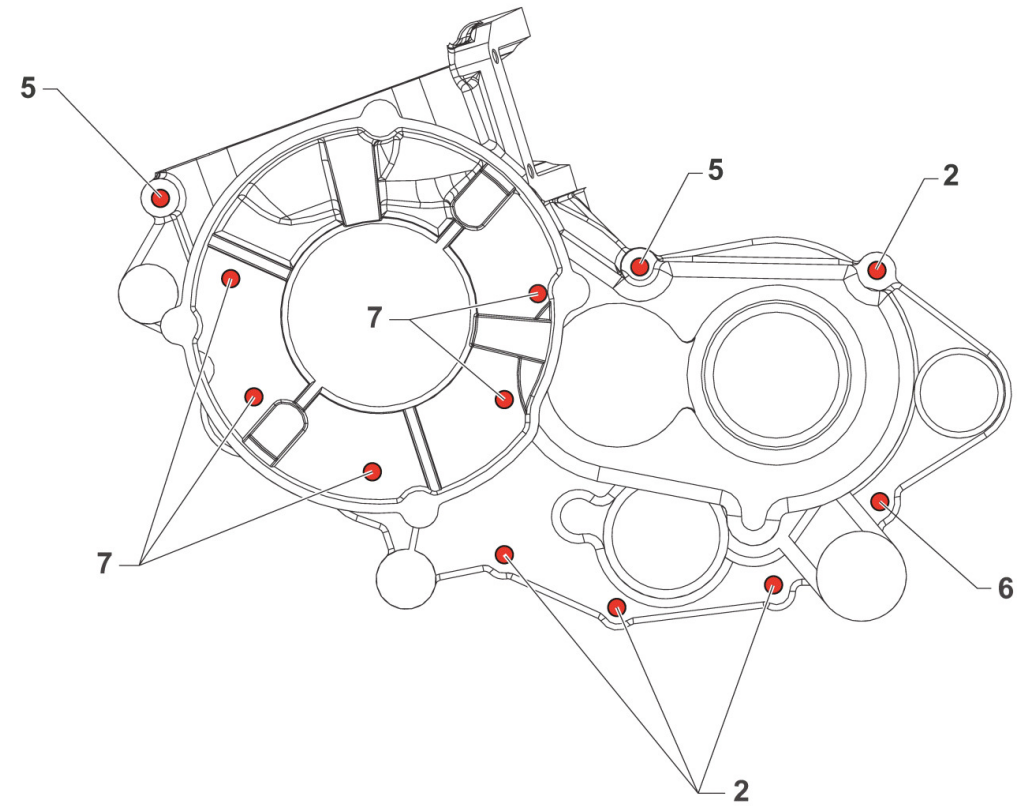
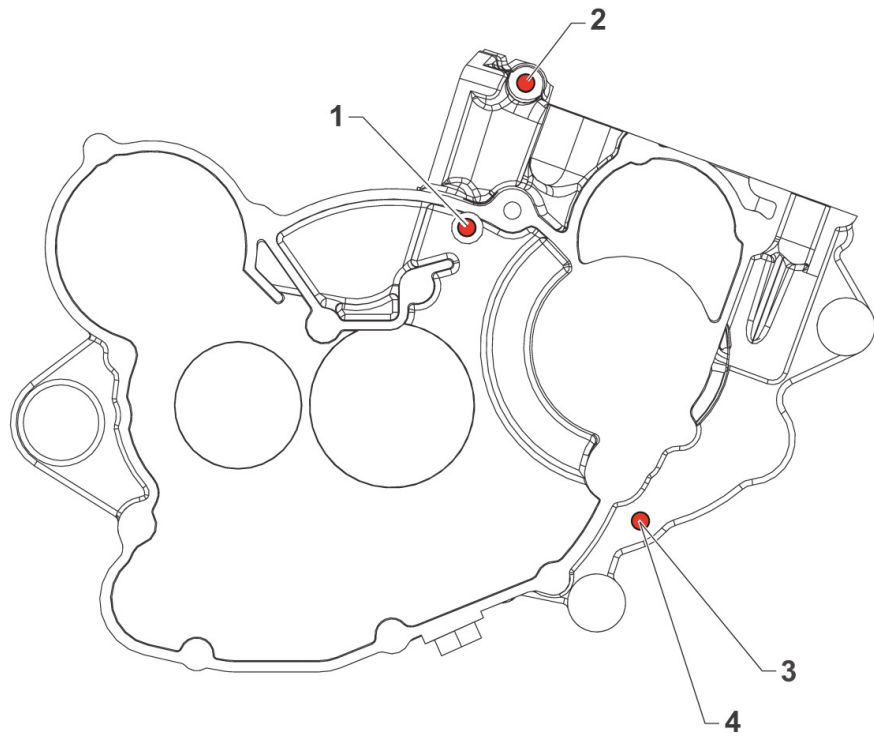
10

| Pos. | Codice | Q.tà | Note | Descrizione | Description |
|------|--------|------|------|----------------------------------|------------------------------|
| 1 | 49476 | 12 | | VITE TCEI 5X20 UNI 5931 | BOLT TCEI 5X20 |
| 2 | 49563 | 1 | | VITE TCEI 6X85 | SCREW TCEI 6X85 |
| 3 | 49595 | 2 | | VITE TCEI 5X80 UNI 5931-912 Brun | BOLT TCEI 5X80 |
| 4 | 49477 | 1 | | VITE TCEI 5X25 UNI 5931-912 | BOLT TCEI 5X25 |
| 5 | 49480 | 1 | | VITE TCEI 6X10 UNI 5931 | BOLT TCEI 6X10 |
| 6 | 49104 | 1 | | RONDELLA 6 x 10 x 1,5 ALLUMINIO | WASHER 6 x 10 x 1.5 ALUMINUM |
| 7 | 49593 | 1 | | VITE TCEI 4X8 U. | BOLT TCEI 4X8 U. |
| 8 | 49986 | 1 | | VITE TCEI 5X75 | BOLT TCEI 5 X 75 |



2T112MXJ23-M
MOTORE - ENGINE

VITI BASAMENTO





2T112MXJ23-M
MOTORE - ENGINE

VITI BASAMENTO

11

| Pos. | Codice | Q.tà | Note | Descrizione | Description |
|------|--------|------|------|---------------------------------|------------------------------|
| 1 | 49491 | 1 | | VITE TCEI 6X55 | BOLT TCEI 6X55 |
| 2 | 49409 | 5 | | VITE TSEI 6X35 | |
| 3 | 49104 | 1 | | RONDELLA 6 x 10 x 1,5 ALLUMINIO | WASHER 6 x 10 x 1.5 ALUMINUM |
| 4 | 49480 | 1 | | VITE TCEI 6X10 UNI 5931 | BOLT TCEI 6X10 |
| 5 | 49490 | 2 | | VITE TCEI 6X50 UNI 5931 | BOLT TCEI 6X50 |
| 6 | 49488 | 1 | | VITE TCEI 6X40 | BOLT TCEI 6x40 |
| 7 | 49489 | 5 | | VITE TCEI 6X45 UNI 5931 | BOLT TCEI 6x45 |