



USES AND
RACOMMENDS



www.tmracing.it

TM Racing SpA - Via Fano, 6
61122 Pesaro - ITALY
Phone: +39 0721 25113

2T250MX09-M

MOTORE
ENGINE

06/08/2023



INFORMAZIONI GENERALI

Il presente catalogo serve per richiedere con esattezza le parti di ricambio.

Nelle ordinazioni indicare:

1) Il numero di matricola del Telaio che è stampigliato sul lato destro del canotto di sterzo. Nei modelli EN, SMR, SMR il numero di matricola è riportato anche su una targhetta posta sul lato sinistro (Vedi foto).

2) il numero di serie del Motore. E' posto sulla sinistra del motore tra la leva cambio e i coperchio accensione (Vedi foto).

3) Il codice dei particolari seguito dalla descrizione.

4) Il colore per i pezzi verniciati o comunque colorati.

Le indicazioni destra e sinistra si riferiscono ai lati del veicolo rispetto al senso di marcia.

Foto e disegni sono solo a scopo informativo e potrebbero non corrispondere esattamente alle caratteristiche dei prodotti.

GENERAL INFORMATION

The present spare parts catalogue enables one to order exactly the right spare part.

When ordering specify:

1) The frame serial number. It is embossed on the right side of the steering metal tube. In the EN, SMR and SMR models, the serial number is also stated on a plate positioned on the left hand side (See photo).

2) The engine serial numer. It is located on the left side of the engine between the gear lever and the ignition cover (See photo).

3) The part's code number followed but its description.

4) Indicate colour for painted or colored parts.

References to right and left apply to the vehicle in terms of its direction of movement.

Photos and drawings are for informational purposes only and may not exactly match the characteristics of the products.

NOTE – LEGENDA

MY

NOVITA' INTRODOTTA DIFFERENTE O NON PRESENTE NEL MODELLO DELL'ANNO PRECEDENTE

PART DIFFERENT OR NOT PRESENT IN THE REVIOUS YEAR MODEL

5M

MOTORE CON CAMBIO A 5 MARCE
ENGINE WITH 5 GEARS SPEED

6M

MOTORE CON CAMBIO A 6 MARCE
ENGINE WITH 6 GEARS SPEED

KS

MOTORE CON SOLO KICK STARTER
ENGINE WITH KICK STARTER ONLY

ES

MOTORE CON AVVIAMENTO ELETTRICO
ENGINE WITH ELECTRIC STARTER

X

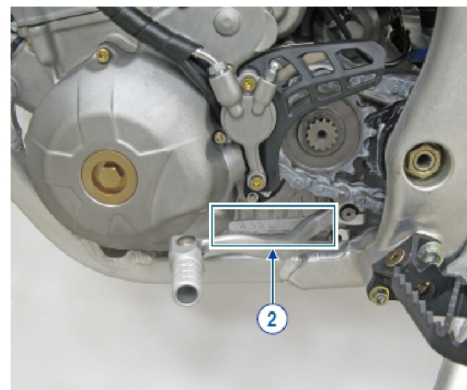
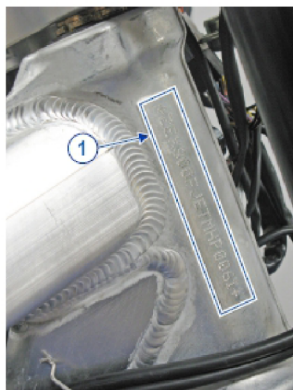
RICAMBIO NON DISPONIBILE ALLA VENDITA
PART CAN NOT BE SOLD SEPARATELY

Le illustrazioni riportate in questo manuale sono fornite solo come riferimento e possono variare dal prodotto effettivo,

Dati indicativi soggetti a modifiche senza impegno di preavviso.

The illustrations in this manual are for reference only and may vary from the actual product.

All data are subject to modification without prior notice.





2T250MX09-M
MOTORE - ENGINE

SOMMARIO
TABLE OF CONTENTS

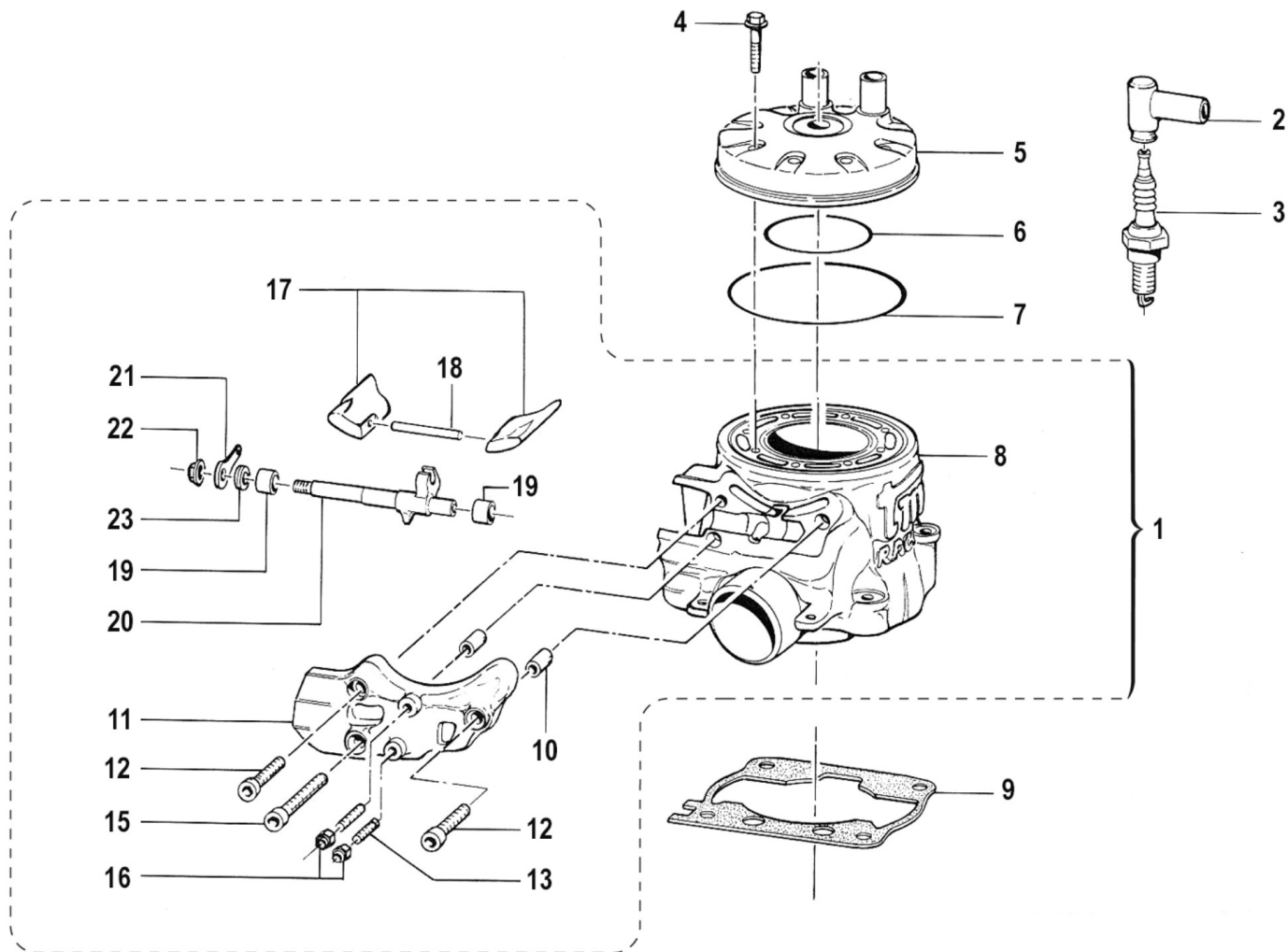
| | |
|--|----|
| CILINDRO - CYLINDER..... | 4 |
| PISTONE - ALBERO MOTORE - CRANKSHAFT - PISTON..... | 6 |
| ACCENSIONE - IGNITION..... | 8 |
| FRIZIONE - CLUTCH..... | 10 |
| CENTRIFUGA - SPIN..... | 13 |
| BASAMENTO - CRANKCASE..... | 16 |
| FORCHETTE M/M..... | 18 |
| CAMBIO MX - GEARBOX MX..... | 21 |



2T250MX09-M
MOTORE - ENGINE

CILINDRO
CYLINDER

1



M250-0814-001



2T250MX09-M
MOTORE - ENGINE

CILINDRO
CYLINDER

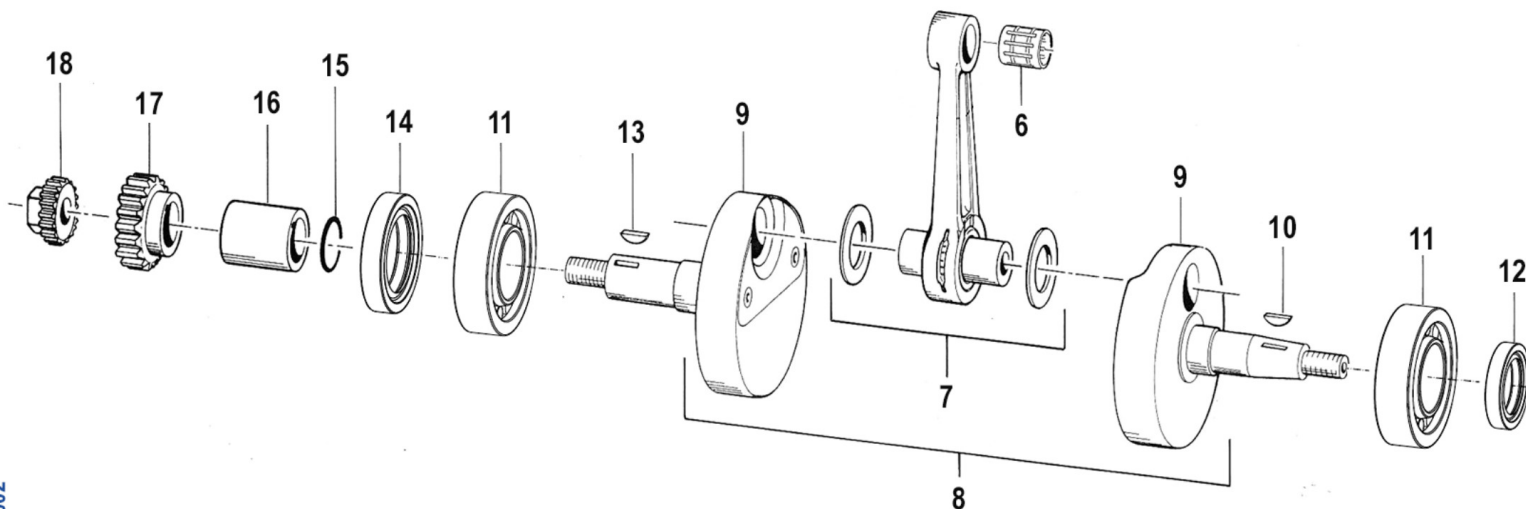
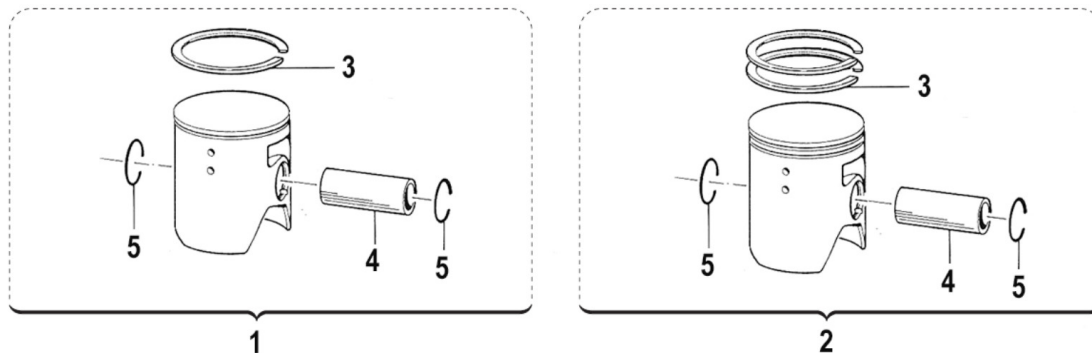
1

| Pos. | Codice | Q.tà | Note | Descrizione | Description |
|------|----------|------|------|--|--------------------------------|
| 1 | 01260 | 1 | | CILINDRO 250 MX/EN 09/14 CPL | CYLINDER 250cc MX/E 09/-> ASSY |
| 2 | 21017 | 1 | | PIPETTA CANDELA NGK LB05EMH | CAP, NGK SPARK PLUG LB05EMH |
| 3 | 06010 | 1 | | CANDELA NGK BR8EG | SPARK PLUG, NGK BR8EG |
| 4 | 49333 | 8 | | VITE TE/FLANG. 8X40 | BOLT 8X40 FLANGED |
| 5 | 02254 | 1 | | TESTA 250 CR/E MOD. 2014 | HEAD 250 MX/E M.14->, CYLINDER |
| 6 | 12250 | 1 | | O RING TESTA PICCOLO 250 sostituito da 12250.1 | O-RING, HEAD 250cc LITTLE |
| 7 | 12251 | 1 | | O RING TESTA/GR.250-KV/95K8-K9 | O-RING, HEAD 250cc KV/95 K8-K9 |
| 8 | 01259 | 1 | | CILINDRO 250 MX/EN 09/14 NUDO | CYLINDER 250 MX/END 09/14 |
| 9 | 05273 | 1 | | GUARN. B/CIL 250 MY 09/14 0,2 | GASKET, CYL 250 M. 08/-> 0,2 |
| 9 | 05274 | 1 | | GUARN. B/CIL 250 MY 09/14 0,3 | GASKET, CYL 250 M. 08/-> 0,3 |
| 9 | 05275 | 1 | | GUARN. B/CIL 250 MY 09/14 0,4 | GASKET, CYL 250 M. 08/-> 0,4 |
| 9 | 05276 | 1 | | GUARN. B/CIL 250 MY 09/14 0,5 | GASKET, CYL 250 M. 08/-> 0,5 |
| 10 | 26041 | 2 | | GRANO CENTRAGGIO D.7X8 F.5,2 | DOWEL PIN 7 x 8 Hole 5,2 |
| 11 | ND | 1 | | NON DISPONIBILE | TEMPORARILY NOT AVAILABLE |
| 12 | 49477 | 2 | | VITE TCEI 5X25 UNI 5931-912 | BOLT TCEI 5X25 |
| 13 | 49703 | 2 | | GRANO 5X20 VALV. | GRUB SCREW 5 X 20 VALVE |
| 15 | 49476 | 2 | | VITE TCEI 5X20 UNI 5931 | BOLT TCEI 5X20 |
| 16 | 49633 | 2 | | DADO M 5 BASSO AUTOBLOCCANTE | NUT 5mm, LOW SELF-LOCKING |
| 17 | 22253.08 | 1 | | VALVOLA GHIGL. 250 MOD. 08/14 | POWER VALVE 250 MOD. 08/14 |
| 18 | 19019 | 1 | | RULLINO VALV. 4X39.8 250 M99 | PIN 4X39,8 EXH.VALVE 250 M.99 |
| 19 | 19045 | 2 | | ASTUCCIO A RULLI HK 0810 | NEEDLE BUSH HK 0810 |
| 20 | 28026 | 1 | | ALBERINO COM VAL. 125/250 99/11 | SHAFT P.VALVE 125/250 M. 99/05 |
| 21 | 28039 | 1 | | PIASTRINO SUP.V 80/125 99/06 250 97/05 | UP PLATE, VALVE 80/125 99/06 |
| 22 | 49701 | 1 | | DADO M 5 FLANGIATO VALV. | NUT 5mm, FLANGED VALV. |
| 23 | 04006 | 1 | | PARAOILIO VALV.SCARIC.G.8x12x3 | OIL SEAL 8 x 12 x 3 |



2T250MX09-M
MOTORE - ENGINE

PISTONE - ALBERO MOTORE
CRANKSHAFT - PISTON



M250-0814-002

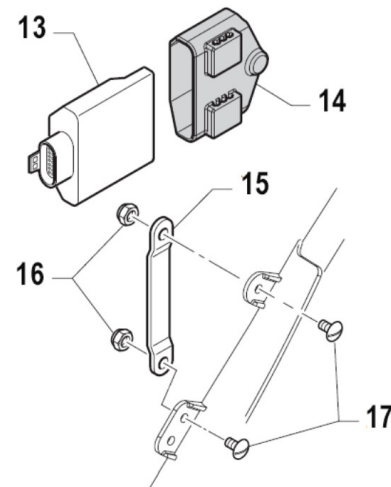
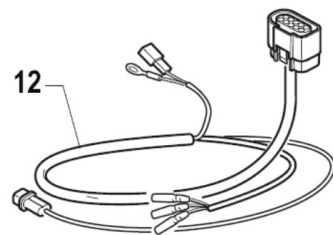
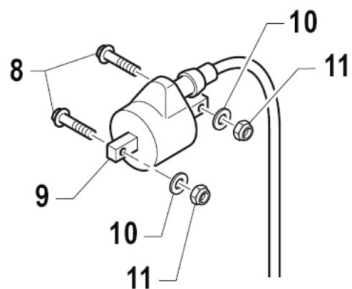
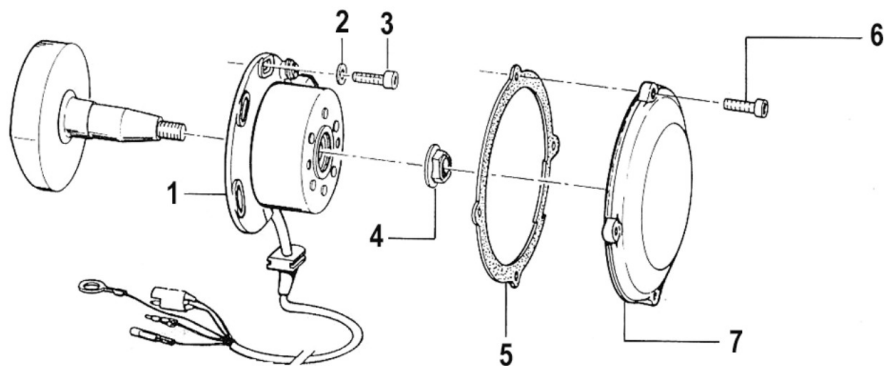


2T250MX09-M
MOTORE - ENGINE

PISTONE - ALBERO MOTORE
CRANKSHAFT - PISTON

2

| Pos. | Codice | Q.tà | Note | Descrizione | Description |
|------|----------|------|------|----------------------------------|---------------------------------|
| 1 | 10510 | 1 | | PISTONE 66,33 250 CPL M.99/-> | PISTON 66.33 250cc 99/-> Comp. |
| 1 | 10511 | 1 | | PISTONE 66,34 250 CPL M.99/-> | PISTON 66.34 250cc 99/-> Comp. |
| 1 | 10512 | 1 | | PISTONE 66,35 250 CPL M.99/-> | PISTON 66.35 250cc 99/-> Comp. |
| 2 | 10513.33 | 1 | | PISTONE 66,33 2F 250 CPL M. 19-> | PISTON 66,33 2S 250 ASSY MY19-> |
| 2 | 10513.34 | 1 | | PISTONE 66,34 2F 250 CPL M.19-> | PISTON 66,34 2 RINGS |
| 2 | 10513.35 | 1 | | PISTONE 66,35 2F 250 CPL M.19-> | PISTON 66,35 2 RINGS |
| 2 | 10513.36 | 1 | | PISTONE 66,36 2F 250 CPL M.19-> | PISTON 66,36 2 RINGS |
| 3 | 11251 | 1 | | SEGMENTO 250 CC | PISTON RING 250cc |
| 4 | 09250 | 1 | | SPINOTTO PISTONE 250/300cc | PIN, PISTON 250/300cc |
| 5 | 09251 | 2 | | ANELLINO FERMA SPINOT.250/300 | CLIP, PISTON PIN 250/300 |
| 6 | 19250 | 1 | | GABBIA SPINOTTO 250/300 cc | TOP END BUSH 250/300cc |
| 7 | 18246 | 1 | | BIELLA 250/300 M.05/-> P. CPL | CONROD KIT, 250/300 M.05/-> |
| 8 | 18256 | 1 | | ALBERO MOTORE 250 M.2005 CPL | CRANKSHAFT 250 2005 ASSY Comp. |
| 9 | 18256.1 | 1 | | COPPIA SEMIALBERI 250cc MOD.05 | CRANKSH. 250cc,LH+RH SIDE 05 |
| 10 | 49010 | 1 | | CHIAVETTA VOLANO 13x5x3 | WOODRUFF KEY |
| 11 | 03250 | 2 | | CUSCINETTO 63/28 C3 250/300 | BUSH, CRANKSHAFT 250cc 63/28C4 |
| 12 | 04000 | 1 | | PARAOLIO 20x35x7 PTFE BANCO | OIL SEAL 20 x 35 x 7 |
| 13 | 49012 | 1 | | CHIAVETTA PIGNONE COPPIA 250 | WOODRUFF KEY, 250/300 19x7,5x5 |
| 14 | 04106 | 1 | | PARAOLIO LATO TRASM. 250/96-11 | OIL SEAL 35 x 55 x 7 |
| 15 | 12252 | 1 | | O RING PIGNONE CAT.+DIS.AL.MOT | O-RING, 25,12 x 1,78 |
| 16 | 26250 | 1 | | DISTANZIALE ALB.MOT.L.TRAS.250 | SPACER, CRANKSHAFT 250 RH.SIDE |
| 17 | 40244 | 1 | | PIGNONE C.PRIMARIA.250 MX99Z19 | PRIMARY DRIVE GEAR 19T 250 MX |
| 18 | 40247 | 1 | | DADO ING.POMPA H2O VALV.250 | NUT LUBIC.WATER PUMP 250cc |



2T250-0810-M003.1

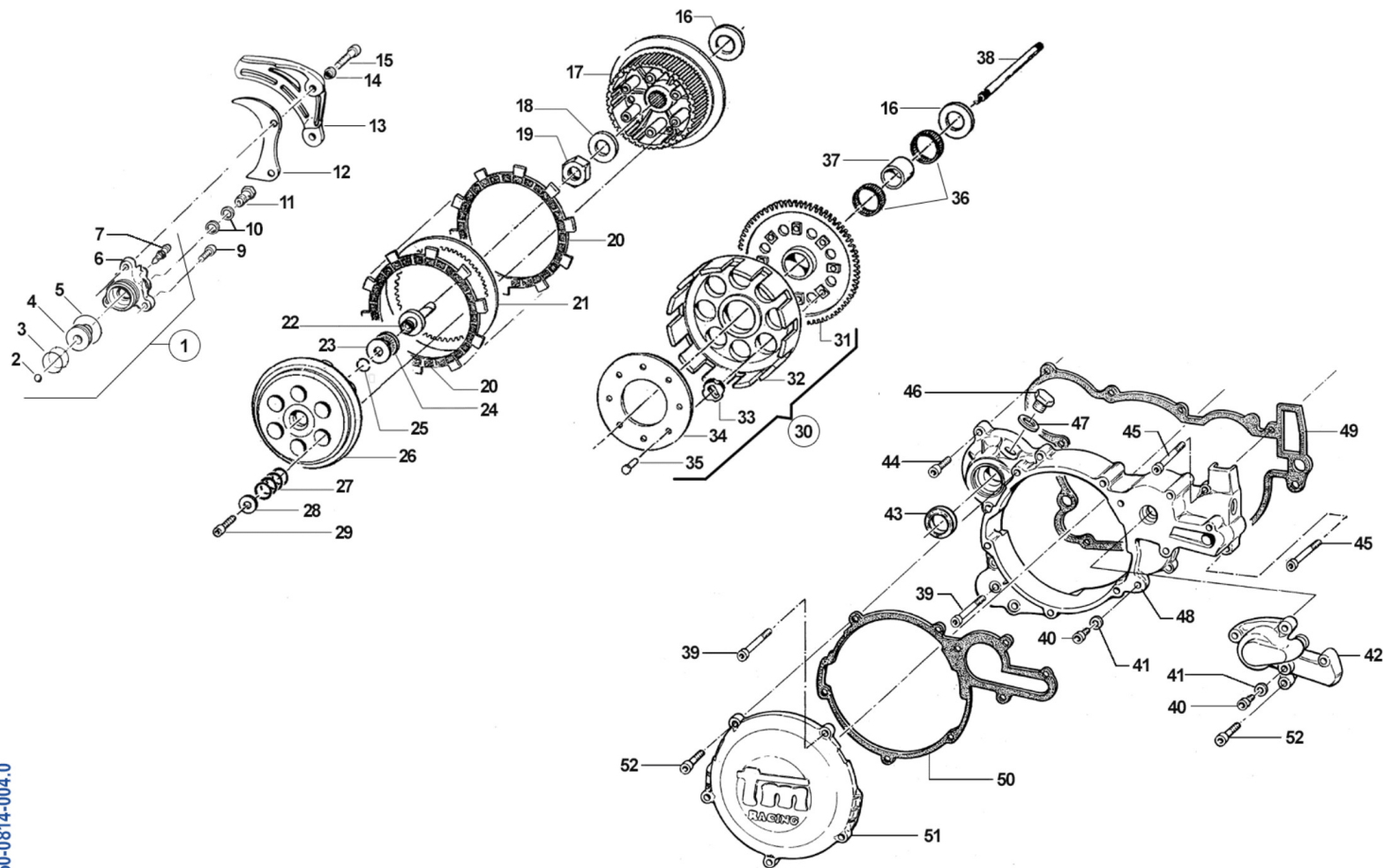


2T250MX09-M
MOTORE - ENGINE

ACCENSIONE
IGNITION

3

| Pos. | Codice | Q.tà | Note | Descrizione | Description |
|------|----------|------|------|---|--------------------------------|
| 1 | 15200 | 1 | | GENERATORE AC KOKUSAN 125/250 | GENERATOR KOKUSAN AC 125/250 |
| 2 | 49603 | 2 | | RONDELLA M 6,4 X 12 X 1,6 | WASHER 6x12 |
| 3 | 49484 | 2 | | VITE TCEI 6X20 | BOLT TCEI 6X20 |
| 4 | 49657 | 1 | | DADO FLANG. ACC.KOKUSAN MX M.95/09 M12 X 1,25 | NUT IGNITION KOKUSAN MX |
| 5 | 05259 | 1 | | GUARN. COP.ACC. 250/300 KOKUS | GASKET, KOK.IGNIT.COV. 250/300 |
| 6 | 49477 | 3 | | VITE TCEI 5X25 UNI 5931-912 | BOLT TCEI 5X25 |
| 7 | 30267 | 1 | | COP. ACCEN. MX 250 2010 KOK PF | COVER, IGNITION MX 250 K 10/-> |
| 8 | 49358 | 2 | | VITE TE F/R 6X30 Ch.8 | BOLT 6X30 T.8 |
| 9 | 15206 | 1 | | BOBINA KOKUSAN PIC. 2T IG7112 | COIL, KOKUSAN 2 STROKE IG7112 |
| 10 | 49603 | 2 | | RONDELLA M 6,4 X 12 X 1,6 | WASHER 6x12 |
| 11 | 49637 | 2 | | DADO M 6 BASSO AUTOBLOCCANTE | NUT, M6 LOW SELF-LOCKING |
| 12 | 68120 | 1 | | CABLAGGIO CDI KOK 2T 08/10 | WIRE ECU KOKUSAN 2S 08/10 |
| 13 | 15221.01 | 1 | | CENTRALINA PROGR. 250 2T MAP01 | |
| 14 | F15562 | 1 | | SUPPORTO CENTRALINA KOKUSAN | HOLDER ECU KOKUSAN |
| 15 | F26537 | 1 | | PIASTR.FISS.SUP.ECU KOK.F15562 | PLATE HOLDER UCU KOKUS. F15562 |
| 16 | 49633 | 2 | | DADO M 5 BASSO AUTOBLOCCANTE | NUT 5mm, LOW SELF-LOCKING |
| 17 | 49317 | 2 | | VITE TB LARGA 5X10 LAT.SERB.94 | BOLT TB LARGE 5X10 |



M250-0814-004.0



2T250MX09-M
MOTORE - ENGINE

FRIZIONE
CLUTCH

4

| Pos. | Codice | Q.tà | Note | Descrizione | Description |
|------|--------|------|------|---|--------------------------------|
| 1 | 30265 | 1 | | COP. FRIZ/IDR 250 09/11 CPL | IDR.CLUTCH COVER 250/300 09/11 |
| 2 | 19052 | 1 | | SFERA 8 X FRIZIONE 250 5/16" | BALL, IDR. CLUTCH PUMP |
| 3 | 12259 | 2 | | O RING PISTONE FR.125/250VERDE | O-RING, CLUTCH PISTON 125/250 |
| 4 | 35256 | 1 | | PISTONE POMPA FRIZ. 250 94/03 | PISTON, CLUTCH PUMP 250 94/03 |
| 5 | 12252 | 1 | | O RING PIGNONE CAT.+DIS.AL.MOT | O-RING, 25,12 x 1,78 |
| 6 | 30082 | 1 | | COP. FRIZ/IDR 250 09/11 NUDO | |
| 7 | 35264 | 1 | | VITE SPURGO OLIO FRIZ.IDR.6X1 | SCREW AIR BLEED HYDRAUL.CLUTCH |
| 9 | 49476 | 3 | | VITE TCEI 5X20 UNI 5931 | BOLT TCEI 5X20 |
| 10 | 69034 | 2 | | RONDELLA X BULLONE FREN B22001 | WASHER B22001, BRAKE HOSE |
| 11 | 69093 | 1 | | BULLONE 10X1 TUBO FRENO BREMBO 03 | HOLLOW SCREW M10X1 BREMBO BR. |
| 12 | 40022 | 1 | | PROTEZIONE ERGAL PIGNONE CAT. | PROTECTION, GEAR CHAIN ERGAL |
| 13 | 40029 | 1 | | PROTEZIONE PIGNONE 09/-> PLAST | PROTECTION FRONT SPROCKET09/13 |
| 14 | 26211 | 2 | | BOCCOLA PROT. PIGNONE 250 F.5 | COLLAR, SPROCKET 250cc H.5 |
| 15 | 49535 | 2 | | VITE TCEI 5X35 UNI 5931-912 Brun | BOLT TCEI 5X35 |
| 16 | 48250 | 2 | | SPESSORE COPPIA PRIMARIA 250 | SPACER, PRIMARY GEAR 250cc |
| 17 | 25250 | 1 | | TAMBURELLO FRIZIONE 250/300 | CLUTCH CENTER 250/300 M.94/-> |
| 17 | 50122 | 1 | | CHIAVE FRIZ 250/300 + 4T CPL | CLUTCH TOOL 250/300 + F.S. |
| 18 | 35050 | 1 | | RONDELLA X FRIZ. 250/300/4T | CLUCTH WASHER 250/300/F |
| 19 | 49060 | 1 | | DADO TAMBUR.FRIZ. ALB.PRIM. 250/300 M18X1.5 | NUT, CLUTCH CENTER 250cc |
| 20 | 35253 | 9 | | DISCO FRIZ. GUARNITO 250 94/09 | CLUTCH PLATE, FIBER 250 94/-> |
| 21 | 35255 | 8 | | DISCO FRIZ. ACC. 1,0 mm 250+4T | CLUTCH PLATE, STEEL 1mm 99/04 |
| 22 | 35047 | 1 | | FUNGO FRIZIONE IDRAULICA | LIFTER, CLUTCH 250/300 |
| 23 | 19023 | 1 | | RONDELLA GABBIA RULLI AS 1528 | WASHER, NEEDLE CAGE AS 1528 |
| 24 | 19022 | 1 | | GABBIA A RULLI RAD. AXK 1528 | BUSH CAGE AXK 1528, RADIAL |
| 25 | 09006 | 1 | | ANELLINO FERMA SPINOTTO 80/85/100 | CLIP, PISTON PIN 80/85/100cc |
| 26 | 25253 | 1 | | PIATTO SPING. 250/300 + 4T | PLATE, CLUTCH PRESSURE |
| 27 | F16453 | 6 | | MOLLA FRIZIONE 2/4T 250/450 | SPRING, CLUTCH 2/4T 250/450 |
| 28 | 49604 | 6 | | RONDELLA 6 X18 X 1,6 | WASHER 6x18 |

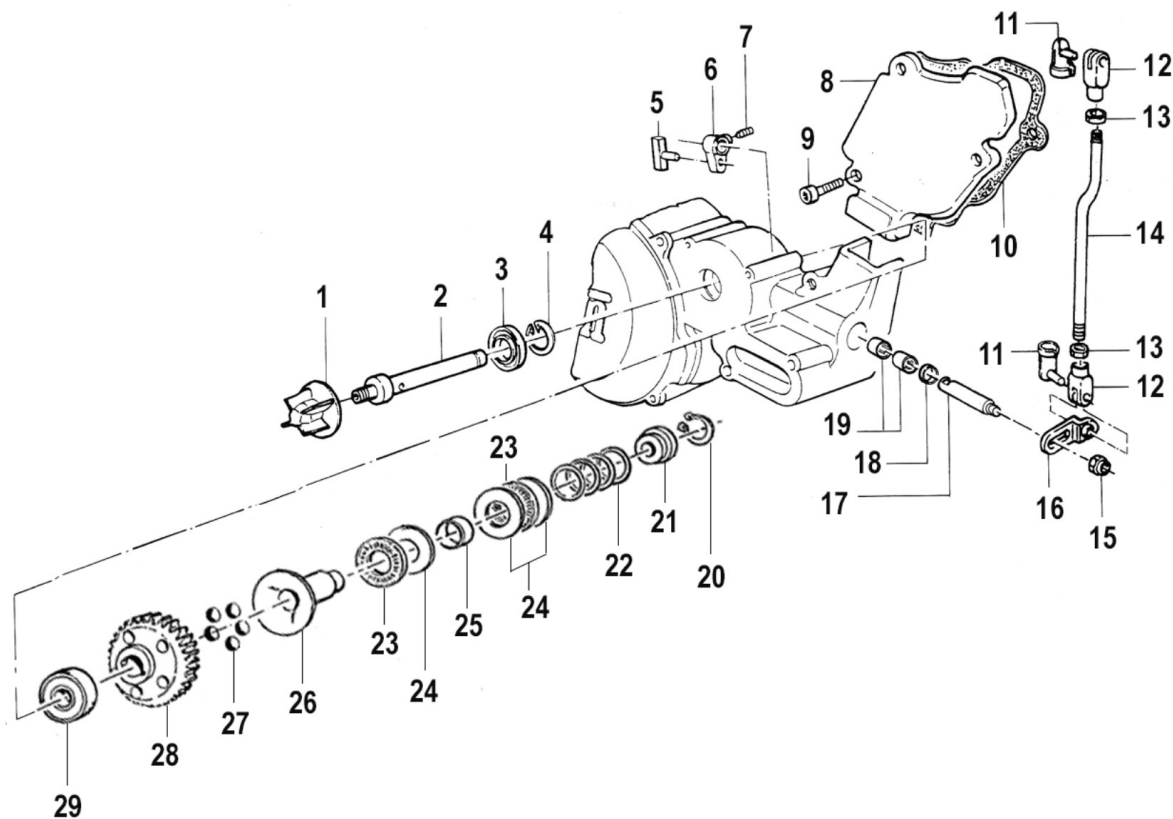


2T250MX09-M
MOTORE - ENGINE

FRIZIONE
CLUTCH

4

| Pos. | Codice | Q.tà | Note | Descrizione | Description |
|------|--------|------|------|--|--------------------------------|
| 29 | 49484 | 6 | | VITE TCEI 6X20 | BOLT TCEI 6X20 |
| 30 | 40245 | 1 | | COPPIA PRIM. 250 2T z57 CPL | PRIMARY GEAR 57T, 250 2T Comp. |
| 31 | 40249 | 1 | | COPPIA PRIM. 250 2/4T Z57 | PRIMARY GEAR 57T, 250 2T |
| 32 | 25251 | 1 | | CAMPANA FRIZ. 250/300 M. 94/17 | CLUTCH BASKET 250/300 M.94/05 |
| 33 | 21005 | 8 | | GOMMINO PARASTRAPPI FRIZIONE | RUBBER, CLUTCH BASKET |
| 34 | 35262 | 1 | | DISCO BATTUTA GOMMINI FRIZ. 2T/4T F.6 MM | PLATE, CLUTCH BASKET 250cc |
| 35 | 49202 | 8 | | CHiodo FRIZIONE K3/KV/K7 D 5,8 | PIN CLUTCH K3/KV/K7/K8/K9 |
| 36 | 19050 | 2 | | GABBIA COPPIA FRIZIONE 250 | NEEDLE CAGE CLUTCH 250cc |
| 37 | 26252 | 1 | | DISTANZ.GABBIA COPPIA FRIZ.250 | SPACER, NEEDLE CAGE CLUTCH 250 |
| 38 | 35046 | 1 | | ASTINA FRIZ.IDR.250/4T 187,5 | ROD, HYDR.CLUTCH 250/F Modif. |
| 39 | 49467 | 1 | | VITE TCEI 6X75 ZINC. | BOLT TCEI 6X75 ZINC. |
| 40 | 49480 | 2 | | VITE TCEI 6X10 UNI 5931 | BOLT TCEI 6X10 |
| 41 | 49104 | 2 | | RONDELLA 6 x 10 x 1,5 ALLUMINIO | WASHER 6 x 10 x 1.5 ALUMINUM |
| 42 | 30257 | 1 | | COPERCHIO POMPA ACQUA 250 CC | WATER PUMP COVER 250cc |
| 43 | 04102 | 1 | | PARAOLIO LEVA M/M 250 | OIL SEAL 30 x 20 x 7 |
| 44 | 49485 | 9 | | VITE TCEI 6X25 UNI 5931 | BOLT TCEI 6x25 |
| 45 | 49487 | 2 | | VITE TCEI 6X35 UNI 5931 | BOLT TCEI 6X35 |
| 46 | 49300 | 1 | | TAPPO CARICO OLIO | OIL PLUG, FILL |
| 47 | 49103 | 1 | | RONDELLA 14X20X1,5 ALLUMINIO | WASHER, 14 X 20 X 1.5 ALUMINUM |
| 48 | 30271 | 1 | | COPERCHIO FRIZ. INT. 250 97/14 | INT. CLUCTH COVER 250 97/03 |
| 49 | 05271 | 1 | | GUARN. COP.FRIZIONE 250 97/-> | GASKET, CLUTCH CASER 250 97/-> |
| 50 | 05257 | 1 | | GUARN. COP.FRIZIONE EST. 250 | GASKET, EXT.CLUTCH COVER 250cc |
| 51 | 30272 | 1 | | COPERCHIO FRIZ. EST. 250 97/14 | EXTERNAL CLUCTH COVER 250 97/4 |
| 52 | 49484 | 16 | | VITE TCEI 6X20 | BOLT TCEI 6X20 |



M250-0814-005



2T250MX09-M
MOTORE - ENGINE

CENTRIFUGA
SPIN

5

| Pos. | Codice | Q.tà | Note | Descrizione | Description |
|------|--------|------|------|---|--------------------------------|
| 1 | 28010 | 1 | | GIRANTE POMPA ACQUA | IMPELLER, WATER PUMP |
| 2 | 28002 | 1 | | ALBERINO POMPA CENTR. 01/05 | SHAFT, WATERPUMP 01/05 |
| 3 | 04004 | 1 | | PARAOLIO POMPA H2O-LEVA CAMBIO | OIL SEAL 12 x 22 x 5 |
| 4 | 49215 | 1 | | SEEGER I22 POMPA ACQUA | CIRCLIP D.22 WATER PUMP |
| 5 | 28036 | 1 | | MARTELLETTO VALV. | PIN P. VALVE |
| 6 | 28035 | 1 | | BIELLETTA ALBERINO VALV. | CONROD P.V. SHAFT |
| 7 | 49702 | 1 | | GRANO 5X 6 VALV.SC.MARTELLETTO | GRUB SCREW 5 X 6 INLET VALVE |
| 8 | 30266 | 1 | | COPERCHIETTO LEV.VALV. 250 09 | COVER, CYL VALVE LINK 250 PLAS |
| 9 | 49473 | 3 | | VITE TCEI 5X14 | BOLT TCEI 5X14 |
| 10 | 05258 | 1 | | GUARN. COP.LEVERAG. 250 94/-> | GASKET, CYL SIDE COVER 250/300 |
| 11 | 49042 | 2 | | MOLLA BLOCCA FORCHETTINA M4 | SPRING, POWER VALVE FORK M4 |
| 12 | 49042 | 2 | | MOLLA BLOCCA FORCHETTINA M4 | SPRING, POWER VALVE FORK M4 |
| 13 | 49630 | 2 | | DADO M 4 (BASSO) | NUT 4mm, LOW |
| 14 | 28255 | 1 | | ASTINA VALVOLA 250 CR/E 94/13 | ROD,POWER VALVE 250 MX/E 94/07 |
| 15 | 49701 | 1 | | DADO M 5 FLANGIATO VALV. | NUT 5mm, FLANGED VALV. |
| 16 | 28037 | 1 | | PIASTRINO INF.V.125/250 94/05 125 M.94/98 250/300 M.94/99 | LOW PLATE, VALVE 125/250 94/05 |
| 17 | 28040 | 1 | | ALBERINO DI RINVIO VALVOLA | SHAFT, POWER VALVE |
| 18 | 04006 | 1 | | PARAOLIO VALV.SCARIC.G.8x12x3 | OIL SEAL 8 x 12 x 3 |
| 19 | 19045 | 2 | | ASTUCCIO A RULLI HK 0810 | NEEDLE BUSH HK 0810 |
| 20 | 49210 | 1 | | SEEGER E08 VALVOLA SCARICO 125 | CIRCLIP, EXHAUST VALVE 125cc |
| 21 | 48020 | 1 | | RONDELLA GUIDA MOLLA P. | |
| 22 | 16045 | 1 | | MOLLA CONTRASTO CENTRIF.250 | SPRING 250 cc |
| 22 | 16046 | 1 | | MOLLA CONTRASTO CENTRIF.300 | SPRING 300 cc |
| 23 | 19022 | 2 | | GABBIA A RULLI RAD. AXK 1528 | BUSH CAGE AXK 1528, RADIAL |
| 24 | 19023 | 3 | | RONDELLA GABBIA RULLI AS 1528 | WASHER, NEEDLE CAGE AS 1528 |
| 25 | 26004 | 1 | | DISTANZIALE SEDE MARTELL.VALV. | |
| 26 | 40061 | 1 | | BUSSOLA PER SFERE D.10.319 M01 | |
| 27 | 19007 | 5 | | SFERA VALVOLA SCARICO | EXHAUST VALVE BALL |

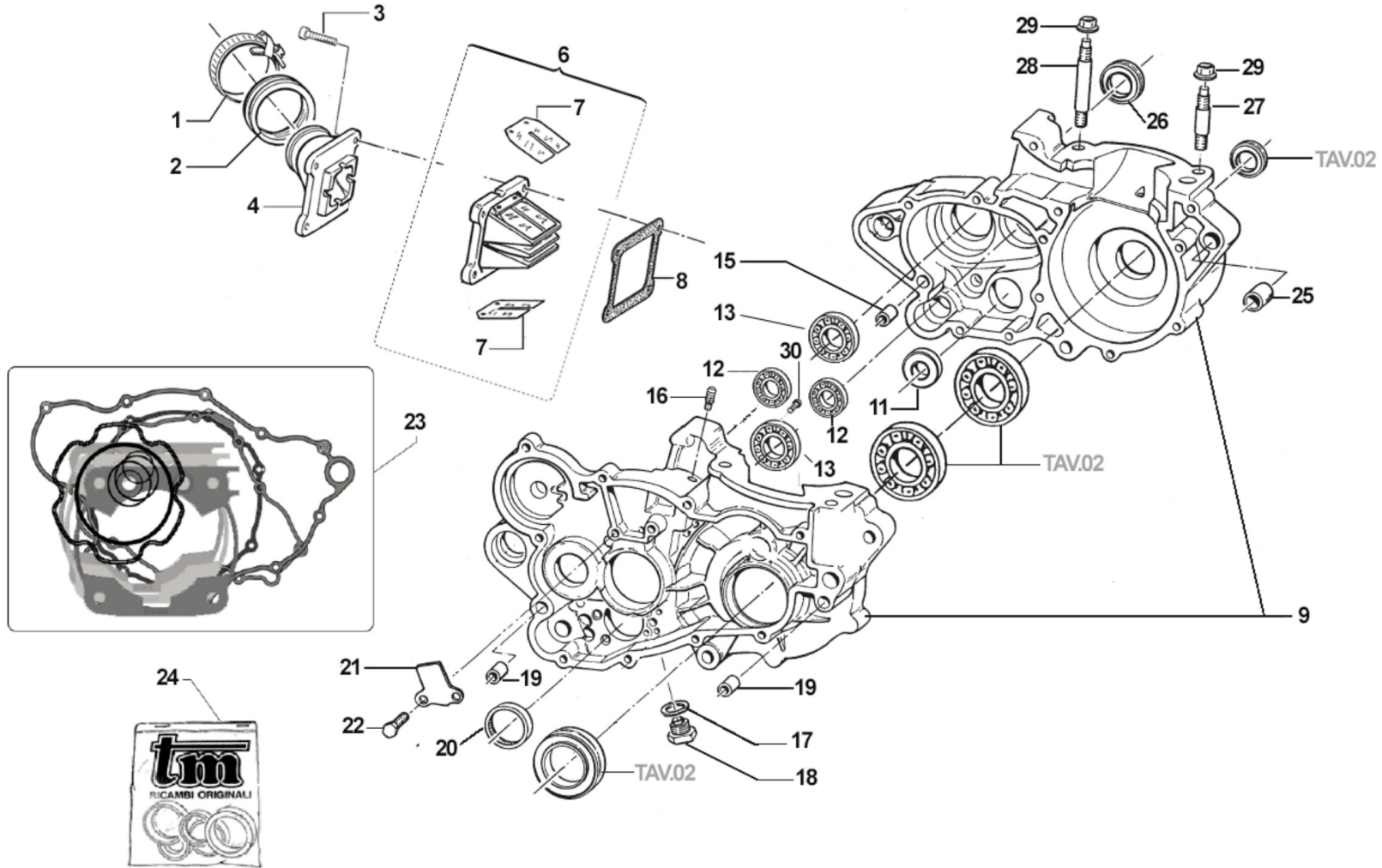


2T250MX09-M
MOTORE - ENGINE

CENTRIFUGA
SPIN

5

| Pos. | Codice | Q.tà | Note | Descrizione | Description |
|------|---------|------|------|--------------------------------|---------------------------|
| 28 | 40252.2 | 1 | | INGRANAGGIO ROT.SFERE 250 2006 | |
| 29 | 03014 | 1 | | CUSCINETTO 608 ZC3 POMPA SCHER | BUSH, WATER PUMP 608 Z C3 |



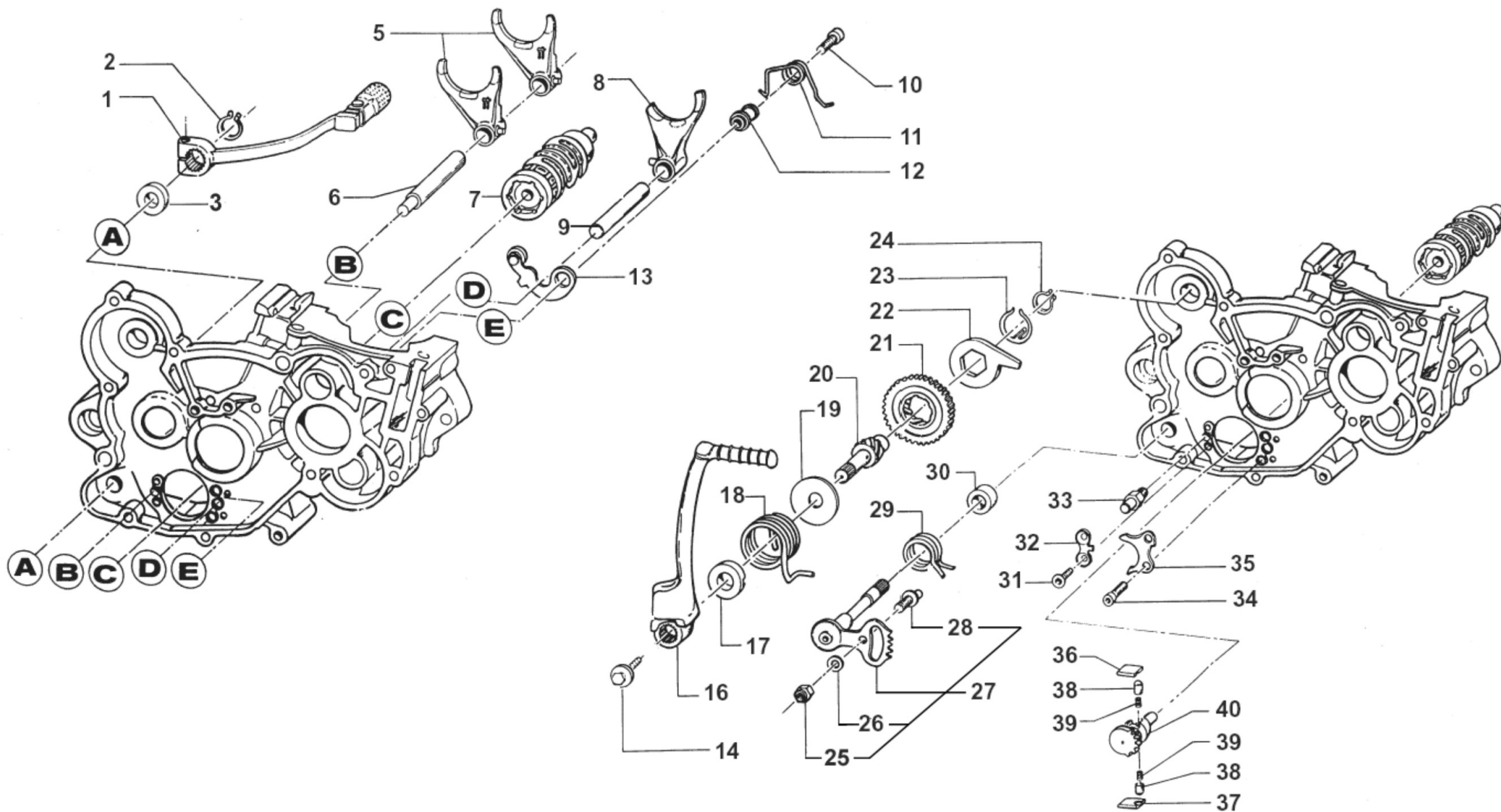
M250-0814-006.1



2T250MX09-M
MOTORE - ENGINE

BASAMENTO
CRANKCASE

| Pos. | Codice | Q.tà | Note | Descrizione | Description |
|------|----------|------|------|----------------------------------|--------------------------------|
| 1 | 51054 | 2 | | FASCETTA SM9 D.52 | CLAMP SM9 D.52mm |
| 2 | 13009 | 1 | | MANICOTTO COLLETTORE ASP.97/14 | MANIFOLD RUBBER,INTAKE M.97/14 |
| 3 | 49485 | 4 | | VITE TCEI 6X25 UNI 5931 | BOLT TCEI 6x25 |
| 4 | 30314.09 | 1 | | CONVOGL. P/LAM 250/3 09/13 VF3 | |
| 6 | 20258 | 1 | | PACCO LAM 250/300 VF3 07/-> | REEDS BOX VF3 250/300 M. 07/-> |
| 7 | 20076 | 1 | | LAMELLE V-FORCE3 250/300 07/-> | REEDS, V-FORCE3 250/300 07/-> |
| 8 | 05268 | 1 | | GUARN. PACCO LAMELLE 250 | GASKET, REED BLOCK 250/300 |
| 9 | 30280.09 | 1 | | BASAMENTO MOT.250 V-FORCE M.09 | |
| 11 | 03012 | 1 | | CUSCINETTO DESMODROMICO 6001 2RS | BUSH, 6001 2RS GEAR DRUM |
| 12 | 03251 | 2 | | CUSCINETTO 6203/C3 A/P A/S 250 | BUSH, MAINSHAFT COUNTER.250/4T |
| 13 | 03252 | 2 | | CUSCINETTO 6205 C4 A/P 250/K9 | BUSH, MAINSHAFT 250 / KZ |
| 15 | 26044 | 1 | | GRANO CENTRAGGIO MOTOR.10X13,6 | GRUB SCREW 10X13,6 |
| 16 | 49009 | 1 | | RACCORDO SFIATO OLIO MX/E F.4 | JOINT, OIL BREATHER |
| 17 | 49103 | 1 | | RONDELLA 14X20X1,5 ALLUMINIO | WASHER, 14 X 20 X 1.5 ALUMINUM |
| 18 | 49301 | 1 | | TAPPO OLIO C/CALAM. 2T | OIL PLUG WITH MAGNET |
| 19 | 26041 | 2 | | GRANO CENTRAGGIO D.7X8 F.5,2 | DOWEL PIN 7 x 8 Hole 5,2 |
| 20 | 19041 | 1 | | ASTUCCIO A RULLI DHK 35/12 | BUSH NEEDLE CAGE DHK 35/12 |
| 21 | 26023 | 1 | | PIASTRINO CONVOGLIATORE OLIO | PLATE, OIL |
| 22 | 49440 | 2 | | VITE TE 6X14 | BOLT TE 6X14 |
| 23 | 05610 | 1 | | KIT GUARNIZIONI + OR 250 CC | GASKETS + OR 250/300 |
| 24 | 04029 | 1 | | KIT PARAOLI 250/300 M.96/14 | OIL SEALS, 250/300cc 96/-> |
| 25 | 26043 | 1 | | GRANO CARTER ANT. 14 X 14 | GRUB SCREW 14X14 |
| 26 | 04101 | 1 | | PARAOLIO PIGNONE CATENA 250 | OIL SEAL 40 x 30 x 7 |
| 27 | 49034 | 2 | | PRIGIONIERO M10X1.5 L.57 | STUD, M10 X 1.5 L.57 |
| 28 | 49035 | 2 | | PRIGIONIERO M10x1.5 L.81.5 | STUD, M10 X 1.5 L.81,5 |
| 29 | 49656 | 4 | | DADO M 10 X 1,5 CH 14 FLANGIATO | NUT, FLANGED M10 CH.14 1,5 |
| 30 | 49370.10 | 1 | | VITE TE F/R 6X10 | |





2T250MX09-M
MOTORE - ENGINE

FORCHETTE M/M

7

| Pos. | Codice | Q.tà | Note | Descrizione | Description |
|------|----------|------|------|--|------------------------------------|
| 1 | 43047 | 1 | | LEVA CAMBIO 2014 + 5MM (252) 250/300 2T 450/530 4T | GEAR LEVER M.2014 + 5mm |
| 2 | 49212 | 1 | | SEEGER E12 LEVA CAMBIO | CIRCLIP D.12 - EXTERNAL |
| 3 | 04004 | 1 | | PARAOLIO POMPA H2O-LEVA CAMBIO | OIL SEAL 12 x 22 x 5 |
| 5 | F33306 | 2 | | FORCHETTA A/S 125/250/300 | SHIFT FORK SEC. F.S. DSM |
| 5 | F33314 | 2 | | FORCHETTA A/S 125/250/300 CROM | SHIFT FORK SECONDARY 125/250CR |
| 6 | 33256 | 1 | | PERNO FORCH.ALB.SEC. 250 / 125.99 | AXEL, COUNTERSHAFT FORK 250cc |
| 7 | 33257 | 1 | | ALBERO DESMODROM. 250 MAGG. 08 | |
| 8 | F33305 | 1 | | FORCHETTA A/P 2T 250/300 | SHIFT FORK PRIM. F.S. DSM |
| 8 | F33313 | 1 | | FORCHETTA A/P 2T 250/300 CROM. | SHIFT FORK PRIM.250/300cc CROM |
| 9 | 33255 | 1 | | PERNO FORCH.ALB. PRIM.250 / 125.99 | AXEL, MAINSHAFT FORK 250cc |
| 10 | 49485 | 1 | | VITE TCEI 6X25 UNI 5931 | BOLT TCEI 6x25 |
| 11 | 16011 | 1 | | MOLLA BLOCCAMARCE | SPRING, STOP GEAR |
| 12 | 26007 | 1 | | DISTANZIALE MOLLA BLOCCAMARCE | SPACER, STOP GEAR SPRING |
| 13 | 26063 | 1 | | PIASTRINO BLOCCA MARCE COMP. | PLATE, STOP GEAR ASSY |
| 14 | 49369 | 1 | | VITE TE F/R 8X10 Ch.10 M/M | BOLT 8X10 T.10mm(Kich Starter) |
| 16 | 43250.12 | 1 | | LEVA M/M 250/300 MY12 + 4T 450/530 | LEVER, KICK STARTER 250 94/-> + 4S |
| 17 | 26253 | 1 | | DISTANZIALE MOLLA M/M 250 CC | SPACER, KICK START.SPRING 250 |
| 18 | 16253 | 1 | | MOLLA M/M 250/300 + 4T | SPRING, KICK STARTER 250/300 |
| 19 | 48257 | 1 | | RONDELLA ALBERO M/M 250 | WASHER, KICK STARTER SHAFT 250 |
| 20 | F28508.2 | 1 | | ALBERO M/M 250/400 4T NT | SHAFT, KIK STARTER 250/400 F.S |
| 21 | 40349 | 1 | | INGRANAGGIO SCORREVOLE M/M 250 | SLIDING GEAR, KICK STARTER 250 |
| 22 | 26254 | 1 | | LEVA BATTUTA M/M 125/250 96/-> | STOPPER, KICK STARTER |
| 23 | 16254 | 1 | | MOLLA X INGRANAGGIO M/M 250 | SPRING,KICKSTART SLID.GEAR 250 |
| 24 | 49214 | 1 | | SEEGER E15 INGRANAGGIO M/M | CIRCLIP GEAR K.S. 15mm |
| 25 | 49638 | 1 | | DADO M 6 ALTO AUTOBLOCCANTE | NUT 6mm, HIGHT SELF-LOCKING |
| 26 | 49603 | 1 | | RONDELLA M 6,4 X 12 X 1,6 | WASHER 6x12 |
| 27 | 28100 | 1 | | ALBERO COMANDO ING. P.TACRIC. | SHAFT, GEARSHIFT |
| 28 | 26050 | 1 | | BATTUTA ECCENTRICA | ADJUSTER SELECTOR SHAFT |

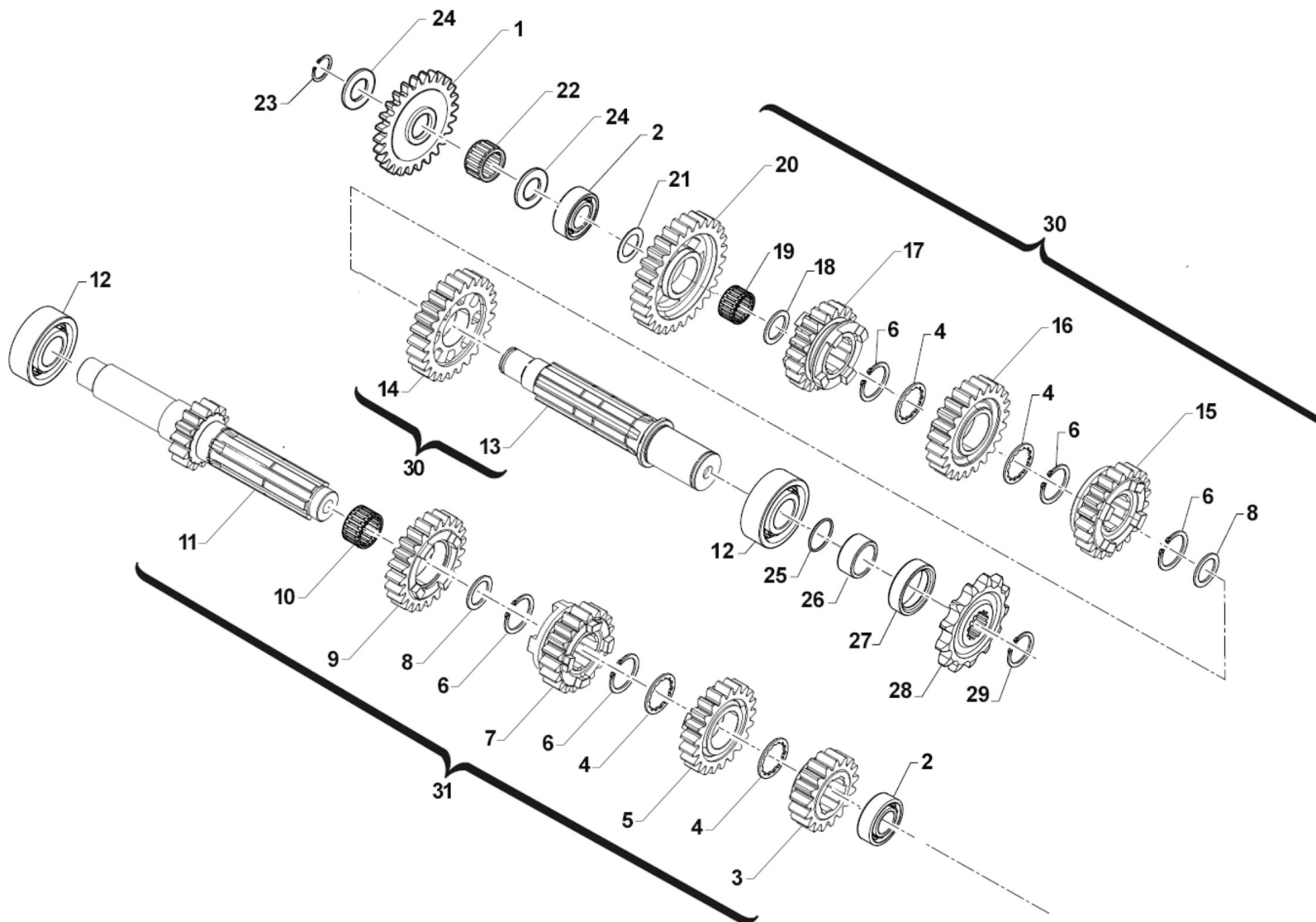


2T250MX09-M
MOTORE - ENGINE

FORCHETTE M/M

7

| Pos. | Codice | Q.tà | Note | Descrizione | Description |
|------|--------|------|------|--------------------------------|----------------------------------|
| 29 | 16009 | 1 | | MOLLA RITORNO LEVA CAMBIO 32CR | SPRING, RETURN GEAR LEVER 3,2 |
| 30 | 26006 | 1 | | DISTANZIALE MOLLA LEVA CAMBIO | SPACER, GEAR LEVER SPRING |
| 31 | 49405 | 2 | | VITE TSEI 6X20 UMB.5933 10.9 | BOLT TSEI 6x20 U.5933 10.9 |
| 32 | 26022 | 1 | | PIASTRINO FINE CORSA | PLATE END STROKE GEAR LEVER |
| 33 | 26051 | 1 | | BATTUTA FISSA LEVA CAMBIO INT. | PLATE INT. END STROKE GEAR LEVER |
| 34 | 49483 | 2 | | VITE TCEI 6X16 UNI 5931 | BOLT TCEI 6X16 |
| 35 | 26021 | 1 | | PIASTRINO RIENTRO CRICCHETTI | PLATE, RATCHET |
| 36 | 26060 | 1 | | CRICCHETTO CAMBIO SUPERIORE | RATCHET UP, GEAR |
| 37 | 26061 | 1 | | CRICCHETTO CAMBIO INFERIORE | RATCHET DOWN, GEAR |
| 38 | 26062 | 2 | | PUNTALE PER CRICCHETTO CAMBIO | PIN, RATCHET GEAR |
| 39 | 16012 | 2 | | MOLLA PER PUNTALE | SPRING, GEARBOX PIN |
| 40 | 40310 | 1 | | INGRANAGGIO PORTACRICCHETTI | DRUM SHIFTER GEAR |





2T250MX09-M
MOTORE - ENGINE

CAMBIO MX
GEARBOX MX

| Pos. | Codice | Q.tà | Note | Descrizione | Description |
|------|--------|------|------|--------------------------------------|--------------------------------|
| 1 | 40348 | 1 | | INGRANAGGIO INTERMEDIO M/M 250 / 450 | GEAR, MIDDLE KICK-STARTER 250 |
| 2 | 03251 | 2 | | CUSCINETTO 6203/C3 A/P A/S 250 | BUSH, MAINSHAFT COUNTER.250/4T |
| 3 | 40255 | 1 | | INGRAN A.P. 2a Z 17 250 CR/E | GEAR, 2ND (17T) MAINSHAFT MX/E |
| 4 | 48251 | 4 | | SPESSORE DENT.CAMBIO 250/KZ10B | SPACER, GEAR 250cc |
| 5 | 40260 | 1 | | INGRAN A.P. 4a Z 21 250 CR/E | GEAR, 4TH (21T) MAINSHAFT MX/E |
| 6 | 49255 | 5 | | SEEGER RETTIFICATO CAMBIO 250 | CIRCLIP, GEAR BOX 250cc |
| 7 | 40258 | 1 | | INGRAN A.P. 3a Z 19 250 CR/E | GEAR, 3RD (19T) MAINSHAFT MX/E |
| 8 | 48254 | 2 | | SPE.S.RE CAMBIO 25.2X31.8X1 250 | SPACER,GEAR BOX250 25.2X31.8X1 |
| 9 | 40262 | 1 | | INGRAN A.P. 5a Z 23 250/CROSS | GEAR, 5TH (23T) MAINSHAFT MX |
| 10 | 19051 | 1 | | GABBIA ING. V AP. 250 | NEEDLE CAGE K 25x29x10 AP250 |
| 11 | 40250 | 1 | | ALBERO PRIMARIO CR Z15/250 | MAINSHAFT 250cc MX 15T |
| 12 | 03252 | 2 | | CUSCINETTO 6205 C4 A/P 250/K9 | BUSH, MAINSHAFT 250 / KZ |
| 13 | 40270 | 1 | | ALBERO SECONDARIO 250/450 | COUNTERSHAFT 250cc |
| 14 | 40275 | 1 | | INGRAN A.S. 2a Z 25 250 CR/E | GEAR, 2ND(25T)COUNTER.MX/E 250 |
| 15 | 40279 | 1 | | INGRAN A.S. 4a Z 21 250 CR/E | GEAR, 4TH(21T)COUNTER.MX/E 250 |
| 16 | 40277 | 1 | | INGRAN A.S. 3a Z 23 250 CR/E | GEAR, 3RD(23T)COUNTER.MX/E 250 |
| 17 | 40281 | 1 | | INGRAN A.S. 5a Z 20 250/CROSS | GEAR, 5TH(20T)COUNTERSH.MX 250 |
| 18 | 48252 | 1 | | SPESSORE CAMBIO 20X29X1 250 | SPACER, GEAR 250 20X29X1 |
| 19 | 19012 | 1 | | GABBIA A RULLI K 20X24X10 | BUSH NEEDLE CAGE 20 X 24 X 10 |
| 20 | 40272 | 1 | | INGRAN A.S. 1a Z 27 250/CROSS | GEAR, 1ST(27T)COUNTERSH.MX 250 |
| 21 | 48253 | 1 | | SPESSORE CAMBIO 17X30X1 250 | SPACER, GEAR BOX 250cc 17X30X1 |
| 22 | 19011 | 1 | | GABBIA A RULLI K 17X21X10 | BUSH CAGE 17 X 21 X 10 |
| 23 | 49253 | 1 | | SEEGER E17 INGR.FOLLE M/M 250 | CIRCLIP, INTERMED.GEAR K.S.250 |
| 24 | 48012 | 2 | | RASAMENTO A/S M/M SPESS.0,5 | SPACER, 26x17x0,5 |
| 25 | 12252 | 1 | | O RING PIGNONE CAT.+DIS.AL.MOT | O-RING, 25,12 x 1,78 |
| 26 | 26255 | 1 | | DISTANZIALE PIGNONE CAT.250 04 | SPACER, SPROCKET DRIVE 250 04 |
| 27 | 04101 | 1 | | PARAOLIO PIGNONE CATENA 250 | OIL SEAL 40 x 30 x 7 |
| 28 | 40212 | 1 | | PIGNONE CATENA Z12 250 | SPROCKET 12T, DRIVE 250/300/4T |



2T250MX09-M
MOTORE - ENGINE

CAMBIO MX
GEARBOX MX

8

| Pos. | Codice | Q.tà | Note | Descrizione | Description |
|------|--------|------|------|--------------------------------|--------------------------------|
| 28 | 40214 | 1 | | PIGNONE CATENA Z13 250/2T e 4T | SPROCKET 13T, DRIVE 250/300/4T |
| 29 | 49252 | 1 | | SEEGER PIGNONE CATENA 250 E 25 | CIRCLIP D.25 FRONT SPROKET 250 |
| 30 | 40291 | 1 | | ALBERO SECONDAR. CPL 250 CROSS | COUNTERSHAFT 250cc MX Comp. |
| 31 | 40290 | 1 | | ALBERO PRIMARIO CPL 250 CROSS | MAINSHAFT 250cc MX Comp. |